

October Report

President, Mike Briggs



As we start October, harvest is in full swing and I hope everyone is having a safe and productive season. Life seems to be getting closer to returning to normalcy or we're accepting a new normal. Business at the farm bureau has continued and I would like to thank our staff for continuing to provide exceptional service and programs. I would also like to say thank you to all of our members who have continued to support us.

The last thing I have for this month is a request for everyone to get out and vote. Please take the time to educate yourself on the issues and candidates and then make sure to get your vote cast.

Have a safe harvest.

Sincerely,
Mike Briggs

Join the Prime Timers!

Prime Timers canceled.

Meetings will tentatively resume in 2021!



Gerald Henry, Prime Timers Chairman

*Meetings are held on the second Thursday of each month
Lunch cost - \$8*

CCFB Calendar of Events October 2020

There are no meetings scheduled in October due to Harvest!

CCFB has been busy hosting Virtual Meetings over the past few months. These meetings have been recorded, uploaded to www.ccfmbureau.com, and are available for you to view. You can find a link to all the meetings on the main page of CCFB's website or by clicking on tab "Virtual Meetings."

FARMLAND USE UPDATE

Did you miss our Farmland Use update from American Farmland Trust? There is great information on the status of farmland conservation and preservation in the US and more specifically in Illinois and what policy actions AFT is recommending to preserve farmland for future generations.

PROGRESSIVE INCOME TAX

Find out more about the Progressive Income Tax question that will be on the November 3, 2020 ballot. Kevin Semlow, Illinois Farm Bureau, is the featured speaker during this meeting.

COUNTY TOWN HALL

CCFB hosted a conversation with Champaign County Sheriff Heuerman and County Executive Kloeppel. Topics ranged from farm safety and the county budget, to the county response to COVID-19.

FARM ECONOMY UPDATE

David Oppedahl, Sr. Economist with the Federal Reserve Bank of Chicago, discussed the state of the farm economy in the Midwest. Follow the link to listen in on a deep dive into factors impacting farmland value, cash rent trends, and farm profitability.

NATIONAL LEGISLATIVE TOWN HALL

Listen in as Congressmen Davis and Shimkus discussed national legislative issues and followed up with a Q & A session.

SAFETY MEETING

The Farm Safety Meeting features Amy Rademaker from Carle's Center for Rural Health & Farm Safety and Dave Newcomb from IFSI. Topics range from mental health to the use of fire extinguishers!

TOOLSHED MEETING

A virtual Toolshed meeting took place in early August. Check out Mark Gebhards, Illinois Farm Bureau, covering a wide range of state and national legislative issues.

***The Champaign County Farm Bureau
Women's Committee is open to all women
interested in agriculture.***

Women's Committee

Upcoming Schedule of Events

October - NO ZOOM Meeting

November 9th - Zoom Meeting 9:30am

December 14th - Zoom meeting 9:30am

CONGRATULATIONS

Mary Quinlan of Thomasboro

Winner of the Plat Map Drawing

Important Dates for the Upcoming General Election

October 6	Regular voter registration ends
October 7	Grace period voter registration and voting begins
October 18	Online voter registration ends
October 29	Last day for absentee ballot applications by mail
November 2	Last day for absentee ballot applications, Early Voting ends
November 3	Election Day



THANK YOU



August 31st wrapped up Champaign County Farm Bureau's membership year, and this year was no different than the previous nineteen. For the 20th consecutive year, the CCFB achieved its voting member goal set by the Illinois Farm Bureau. The Champaign County Farm Bureau has the largest voting membership in the state with 2,522 voting members. We want to give a huge thank you to all of our members for helping us achieve this amazing accomplishment. Also, we would like to thank COUNTRY Financial and Illini FS for all the help they provided us this year in signing new members and providing excellent service and support to our membership. Finally, we would like to give all the volunteers who signed new members this year a huge "thank you!" Your CCFB Board of Directors stepped up and signed an incredible amount of new members. It takes a lot of people pulling in the right direction to maintain the membership and, therefore, the strength of the CCFB. We hope each of you continues to support the organization through the end of 2020 and in 2021.

Forest Preserve District Seeks Maintenance Support

On the November 3 ballot, voters will see a referendum question from the Champaign County Forest Preserve District asking property owners to support a very modest tax increase to address a backlog of maintenance projects at the county’s forest preserves. The Champaign County Farm Bureau supports this referendum.

The ballot initiative requests an increase in the District’s property tax limiting rate of 1.6 cents per \$100 of Equalized Assessed Value of taxable property. Put simply, the owner of a \$100,000 home in Champaign County would see a \$5.33 annual increase if the referendum is approved by voters. That equates to about 45 cents a month. As for agriculture, an 80-acre parcel with very good soil productivity would see an \$8.30 annual increase, on average. Overall, today, the Forest Preserve amounts to less than 1% of the total taxes collected on your tax bill.

If the referendum passes, this would be the first voter-approved tax increase in the Forest Preserve District’s 72-year history. In that time, forest preserve lands have increased from 260 acres to the 4,000 acres of nature that are protected today along the county’s rivers and streams. Those 4,000 acres comprise: Homer Lake (Homer), Lake of the Woods (Mahomet), Middle Fork River Forest Preserve (Penfield), River Bend (Mahomet), Sangamon River (Fisher), and the Kickapoo Rail Trail (Urbana to Vermilion County line). Just added to its inventory but not yet opened is a new site acquired entirely through grants and donations, Heron View Forest Preserve, located about mid-way between Lake of the Woods and Sangamon River preserves. In addition, the CCFPD owns and operates the Museum of the Grand Prairie and Homer Lake Interpretive Center, Lake of the Woods Golf Course, the Harry L Swartz Campground, and the Mabery Gelvin Botanical Garden.

Today the district has an annual capital budget of approximately \$245,000 annually. With passage of the referendum; an additional \$689,000 would be added to its annual

budget. Projects that will be addressed if the referendum is approved include Middle Fork’s Willow Pond restoration, improvements to the interpretive center at Homer Lake, roofs on Izaak Walton Cabin and the iconic covered bridge at Lake of the Woods, dam and spillway repairs at several lakes, accessibility improvements for individuals with mobility limitations, and restroom, playground and trail upgrades throughout the preserves.

If you would like more information on the referendum including a Frequently Asked Questions document check out YesToForests.org.



Lake of the Woods



Senator Bennett continued from Page 1

allow rural communities to have the same opportunities as metropolitan areas.”

It’s not just row crop farmers that Scott supports, either. He recognizes that the livestock industry has also taken major hits this year. Illinois legislators were responsible for dividing up CARES money that was given to the state. Scott can proudly say, “I worked hard to make sure the agriculture community wasn’t forgotten. We were able to distribute CARES money to pork producers and other livestock producers.”

There is one area, though, that Senator Bennett claims as his greatest accomplishment. “Have you heard of FFRI?”, Senator Bennett asks. “The Farm Family Resource Initiative! This is the accomplishment I am most proud of!” With rural suicide rates climbing and nowhere to turn for help, Scott decided it was time to help farmers deal with the ever-increasing economic and mental stressors they face every day. “I was really inspired by Holly Spangler at Prairie Farmer magazine and her writing about farm suicides and farm depressions. I reached out to my own family to ask their opinion on the subject and learned that everyone has a story. Everyone knows someone who has dealt with stressors, but nobody wants to talk about it.”

Working with the SIU School of Medicine’s Center for Rural Health, Illinois Farm Bureau, U of I Extension, and several other notable farm advocates and industry groups, FFRI is launching a statewide hotline later this year. The hotline will act as a lifeline for those people who are struggling in some way and who want to talk to someone who understands the farming way of life and the unique struggles faced by people working in agriculture. According to Scott, “There is more pressure in agriculture than ever before. People need help and they need it quickly. We have reached out to a similar, successful program in Minnesota for farmers in crisis and the main goal is to quickly and effectively triage the problem. We are working to get the right people in place to help quickly!” While FFRI began with a \$100,000 budget, the support for the program and increasing recognition of the need FFRI meets has caused the budget to be increased to \$300,000.

Key agriculture issues remain on the horizon and Senator Bennett is dedicated to maintaining agriculture as the #1 industry in



Senator Bennett represents the 52nd Senate District comprised of Champaign and Vermilion counties and including communities such as Champaign-Urbana, Rantoul, and Danville.

the state of Illinois. “We need to recognize that to keep the agriculture community growing we need to get younger people involved in the industry. From research to developing seed traits to being an ag lender, the possibilities are endless! Recognizing the diversity of jobs in agriculture is essential to our growth!” Scott is the perfect example of taking his interest in agriculture off the family farm. Scott’s work ethic and drive, qualities fostered on his family’s farm, led to law school and a very successful career as a Champaign County Assistant State’s Attorney which in turn led him to the Illinois State Senate.

Justin Leerkamp, CCFB’s Governmental Affairs Committee Chairman, says, “Illinois State Senator Scott Bennett is a true friend of agriculture. He remains one of the few legislators in Springfield that have direct ties to the farm. In his tenure serving as the Chairman of the Senate Agriculture Committee, he has been instrumental in making decisions that positively impact the ag community in Illinois. The citizens of Senator Bennett’s district certainly benefit from his dedication to improving the lives of Illinoisans and we in agriculture are lucky to have such a champion of our interests serving in Springfield.”

Champaign County Farm Bureau

Political Involvement Committee

endorses the following candidates

- Gary Maxwell – Auditor
- Katie Blakeman – Circuit Clerk
- Duane Northrup – Coroner
- Mark Sheldon – Recorder of Deeds
- Julia Reitz – State’s Attorney
- Ted Myhre – Treasurer



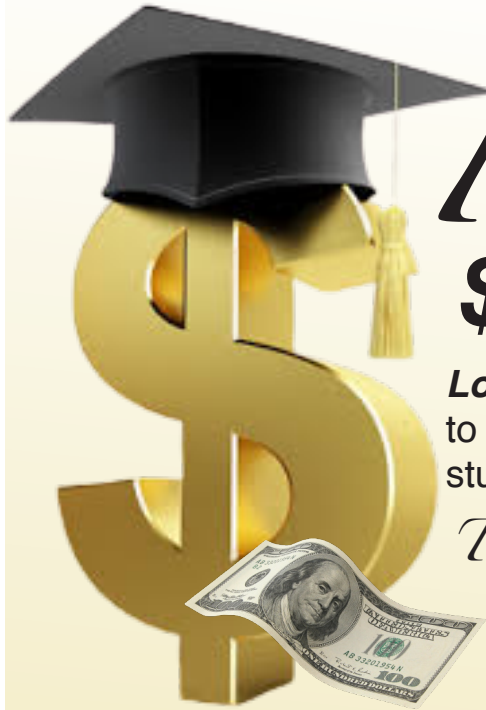
- County Board
- Jacob Paul - District 1
 - Diane Michaels - District 2
 - Stan Harper – District 3
 - Brad Passalacqua – District 4
 - Jon Rector – District 5

Feeding our Future.
Fueling our Industry.

CCFBFOUNDATION.COM

f /CCFBFOUNDATION

t /CCFB_FOUNDATION



Foundation Awards \$1,000,000th Scholarship Dollar!

Look what we did together! The generous support of our community has propelled us to reach this great milestone of **ONE MILLION DOLLARS** invested in Champaign County students. We can't wait to award the next million dollars with your steadfast support!

Thank You!

Cory Mitchell - President
CCFB Foundation Board of Directors

Kirk Builta - Executive Director
CCFB Foundation



MRS. KAPER'S CLASSROOM



CHAMPAIGN COUNTY AG IN THE CLASSROOM

SEPTEMBER AND OCTOBER PLAN *Ag In the Classroom*



Kahoot!

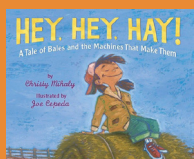
Kahoot is an online, interactive game that is proctored by teachers. We decided to create agricultural related 10 question kahoots and send them out every Monday, starting September 14th. The kahoots will go along with our lessons specific to that month.



We are on Youtube!

Our youtube enables us to post pre-recorded lessons for anyone to access! This platform is a great tool to increase outreach and allow creativity flourish during these times!

Find our youtube channel by searching Champaign Ag in the Classroom



Bonus Lesson: Hey, Hey, Hay!
Every bale of hay has a little bit of summer sun stored in the heart of it-learn from a mother-daughter learn how hay is made!

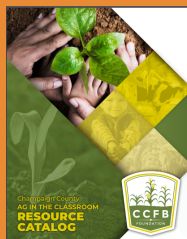
September-October Lessons

- Soybeans-Full of Beans
- What is Watershed?
- The life cycle of an Apple



Resource Catalog

The resource catalog is entirely FREE and filled with a variety of different agricultural lessons! You can find the resource catalog at <https://ccfbfoundation.com/aitc/>

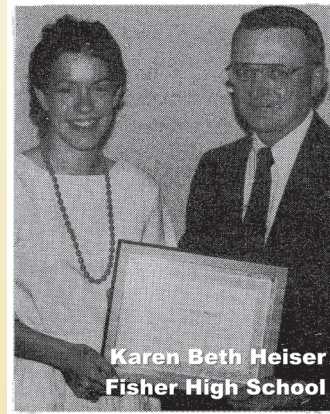


The Scrambled States of America

This lesson highlights every states top commodity! This lesson also comes with a fully interactive jeopardy review game of the different commodities in the United States.



As a foundation we choose to communicate the importance of agriculture in our community, but also within schools. Through agriculture related books, this is a way for teachers to include agriculture in their curriculum. Teachers can now purchase these books through Sarah Kaper, the first order is due October 1st.



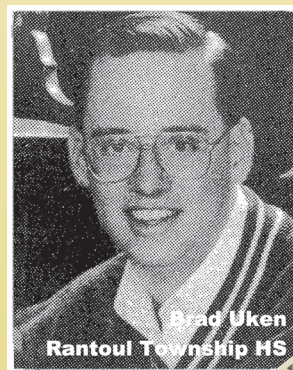
Karen Beth Heiser
Fisher High School



Lori Rae Aden
St. Joseph-Ogden HS

1986 - Foundation Established

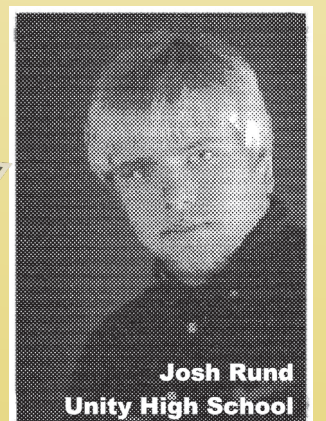
2 Scholarship Recipients - \$1,000 Awarded



Brad Uken
Rantoul Township HS

1996

20 Scholarships Awarded



Josh Rund
Unity High School

2006

44 Scholarships Awarded



Jennifer Lannon
Heritage High School

2016

51 Scholarships Awarded



Noah Benedict
Mahomet Seymour HS

2020

44 Scholarship Recipients
\$70,700 Impact!





Nathan Hubbard
COUNTRY Financial
Agency Manager



Rhonda Wagner
Administrative Assistant
Champaign Agency



Dan Punkay
328-0023



Bret Kroencke
359-9391



Travis Heath
352-4555



Kolby Jackson
586-5030



Keith Garrett
485-3010



Chris Greenwold
355-8675



Jessie DeHaan
352-3466



Dan Duitsman
469-2033



Jordan McDaniel
217-352-9817



John May
352-3341



Terry Hill
469-9800



Austin Beaty
352-0012



Jim Nelson
892-4479



Aaron Wheeler
586-6170



Nate Lovekamp
352-0012



Scott Jackson
359-9335



Dawn Babb
892-4479



Andrew Deedrich
359-3941



Steve Derry
352-2655

COUNTRY Financial Security Index

Back-to-School During a Pandemic: Parents Faced with Tough Financial Decisions and Additional Costs

Parents dealing with financial stress while juggling parenting, teaching and working

September, 2020

BLOOMINGTON, Ill. – Back-to-School season looks very different for Americans this year; and with the closures of schools and childcare centers around the country to prevent the spread of COVID-19, parents are facing a unique set of financial challenges.

A new survey from COUNTRY Financial reveals that 21 percent of parents have already had to change or reduce work hours due to changes in school or childcare options, while seven percent had to leave a job altogether—both changes that could negatively impact monthly income.

Now, the Back-to-School season is bringing additional financial burdens, with more than half (51 percent) of parents with children under 18 reporting they are experiencing additional financial concerns this year as a result of the pandemic.

“Parents are being forced to make financial decisions that were not a part of their plan before the pandemic hit,” said Troy Frerichs, Vice President of Investment Services at COUNTRY Financial. “Now, they’re faced with the possibility of leaving a job or reducing their work hours to homeschool or help their kids with remote learning, which can have a major financial impact on their household. Now is a time parents have to reassess their financial goals and create a new game plan that takes changes to their income as well as new expenses into account.”

Parents Take on Additional Expenses in Unique Back-to-School Season

Parents have experienced more financial stress during the pandemic, with nearly a quarter of parents surveyed (22 percent) reporting that COVID-19 has impacted their ability to pay bills, compared to 12 percent of non-parents. Additionally, since the start of the pandemic, parents have been more likely than non-parents to delay paying rent, credit card bills, auto insurance bills and retirement contributions, with 27 percent of parents having to delay at least one of these payments compared with 17 percent of non-parents.

The atypical Back-to-School season is compounding these financial stressors, creating additional expenses for parents – especially parents of children learning remotely this fall. The survey found that parents’ overall greatest financial concerns as their children head into Back-to School season include increased food costs (26 percent), the cost of new technology and internet service (21 percent) and an increase in childcare expenses (13 percent). Parents estimate they’ll spend up to an additional \$500 per month (68 percent) to cover these costs.

A third of parents (34 percent) with children attending classes virtually this fall are concerned with the cost of food, compared with just 19 percent of parents with children attending school in-person. Those attending hybrid (28 percent) or homeschooling (31 percent) are more concerned about purchasing new technology or equipment than those attending school in-person (15 percent).

Meanwhile, parents with children under the age of 10 are significantly more worried about increased childcare expenses (19 percent) and having to change or reduce their hours to take care of their children (18 percent). Additionally, parents with children under five worry about losing their job due to performance issues because of a lack of childcare (13 percent).

“With schools and local governments making decisions about whether our children will be learning in-person or virtually this fall, it’s easy for parents to feel as though they have lost control and can’t keep up financially with all of the disruptions to their plans,” continued Frerichs. “My challenge to parents is to sit down and create a new plan addressing their most important needs such as managing day-to-day cashflow and affording everyday expenses first, then protection such as insurance, and long-term savings such as retirement or college funds.”

Parents with Adult Children Also Feeling Financial Strains

In addition to parents of school-aged children, parents with children 18 and older are also feeling additional financial burdens as a result of the changes brought on by the pandemic.

The survey found that one in five parents (21 percent) with a child college-aged or older have had their child move back in with them during the pandemic. Parents have also had to help their adult children with a variety of different expenses, with 50 percent of parents helping their adult children pay everyday expenses including their cell phone bill, gas or groceries, 21 percent helping to pay healthcare costs and 11 percent helping to pay rent or mortgage expenses.

While some parents may have been financially supporting their adult children prior to the pandemic, 35 percent of parents of adult children report they have been providing a moderate amount of additional financial support to their children during the pandemic compared to before it.

“For adult children facing new financial challenges as a result of the pandemic, there’s no shame in moving home to save money—in fact, for some, it could be the best financial strategy,” said Frerichs. “However, parents should make sure when taking on some extra expenses for their adult children, they are not losing sight of their own long-term goals, like their retirement. Setting boundaries and expectations are especially important as parents help their adult children get back on their feet during a difficult time.”

To learn more, visit countryfinancial.com.



KORY KRAUS,
GENERAL MANAGER

From The Field

by Dr. Howard Brown

Corn stalk quality may deteriorate rapidly over the next few weeks. It is critical to monitor stalk quality by field as we move through the 2020 harvest season. Inspect 20 plants in five locations per field. Pinch the lower two internodes or push the stalk over at least five inches. Count the number of soft and/or broken stalks in relation to the total observed. If you find 10 to 15% of the stalks showing weakness, schedule the field for next to harvest.

Patchy areas of disappointing yield. Disappointing areas within some harvested fields are likely the result of weather conditions of late April/May. Many of late emerging or slow growing plants did not fully recover, resulting in a weak plant and smaller-than-expected ear (or no ear at all) at harvest.

Soybean Cyst Nematode. Access field for Soybean Cyst Nematode Populations following soybean harvest. Populations of the pest should be at a peak (harvest), making identification of problem areas more likely. Areas identified as having high cyst counts following soybeans will provide a great testing ground for cyst-fighting technologies the next time soybeans are planted. Visit your local Illini FS Crop Specialist about Soybean Cyst Nematode testing and what products are available to manage the pest.

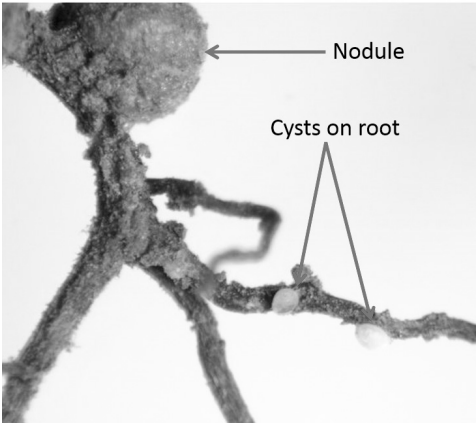


Figure 1. SCN on soybean root. Photo-graphed August, 2020 by Eric Beckett, Field Sales Agronomist for Illini FS.

New nutrient removal numbers. Below are the revised estimates for nutrients removed per bushel of grain by both corn and soybeans (Table 1). Take time and access what is happening to the nutrient reserves in your soils.

Table 1. Crop nutrient removal per bushel revised September 7, 2017.

	P2O5 Removal (lbs/bushel)	K2O Removal (lbs/bushel)
Corn	0.37	0.24
Soybeans	0.75	1.17

Source: The Bulletin, Emerson Nafziger, New Grain Phosphorus and Potassium Numbers, Sept. 7, 2017.

Calculate how many pounds of P2O5 and K2O you are removing. It is time to transition from nutrient applications based upon soil tests to nutrient applications based upon removal. Soil tests will continue to be of value, but only to help determine the soil nutrient status trends over time (up or down). It just makes sense to be focusing on nutrient applications based upon what is removed, rather than what is projected. We have the technology to make it happen. Visit with your local Illini FS Crop Specialist about how we use our tools to generate controller maps to variable rate nutrient applications based upon harvest yield and how the process is simplified by using Climate FIELDVIEW Plus.

Growing the list of nutrients to apply for the 2021 crop. Our nutrient management tool, Nu-TRACKER Plus (formerly N-TRACKER Plus) continues to identify the potential need for supplemental sulfur, zinc and boron. Both soil and tissue samples collected from multiple sites in 2019 and 2020 suggest the need for supplemental nutrients. Visit with your local Illini FS Crop Specialist about the forms available and suggestions for the rate and timing of applications.

"Nutrient use should be a part of a systems approach to nutrient management considering both farm profitability and environmental impact."

Create a Nutrient Utilization Strategy. Making a profitable investment in supplemental nutrient applications is more than just putting in on the field. The 4-Rs of Nutrient Management are needed to ensure a profitable crop response. Source used, rate to apply, time of application and placement are all important. It takes all 4 Rs to make a Nutrient Strategy work.

Let your local Illini FS crop specialist help develop your Nutrient Utilization Strategy for 2021. They have creative tools that will help optimize management decisions. Whether Nu-TRACKER Plus, nutrient applications based upon crop removal, or robotic soil sample collection, we strive to be your trusted business partner delivering winning results through innovative products, services and solutions.

128 local On-Farm Discovery Sites for 2020. Our On-Farm Discovery trials for 2020 have several that are focused on supplemental applications of sulfur, boron and zinc. Visit with your local Illini FS Crop Specialist about the trials and ask for a copy of our On-Farm Discovery Report to learn more about the outcome of the trials. We hope to have the results published soon after harvest is complete.

The season for fall-applied anhydrous ammonia will soon arrive. The length of the 2020 application season will be determined by the November weather pattern. It is my hope that farmers wait until close to the calendar date of November 1 to "start their engines" and a soil temperature of 50° F and trending downward to put everything "in gear". The reason for waiting until soils are cold is to delay microbial conversion, keeping the applied N in a form that is considered stable, ammonium-N. The use of a nitrification inhibitor (N-Serve or Centuro) should delay the process even further.

What will increase the risk of N loss? A warm November and/or early December may be enough to re-start the nitrification process. Once ammonium-N is converted to nitrate-N it is not lost, however it is vulnerable to soil water movement (leaching). Loss by denitrification (saturated soil) is less of a concern during the winter months, since the soils stays relatively cool. Microbes responsible for denitrification are not very active when soils are cold. However, leaching losses are quite possible, depending upon the amount or precipitation received after the conversion to nitrate-N and the ability of water to percolate through the soil profile.

Want to track Plant-Available N, both concentration and form? Illini FS has tracked Plant-Available N for the past six years from post-harvest to pre-tassel the following year. Visit with your local Illini FS Crop Specialist about Nu-TRACKER Plus (Figure 2) and what we've learned from developing the tool. Nu-TRACKER Plus is a Nutrient Management Tool developed by Illini FS, which makes tracking plant-available mobile nutrients (Nitrogen, Sulfur and Boron) easy and affordable. Illini FS has experience tracking plant-available N at over 1000 sites, along with two years of tracking Sulfur and Boron.



Figure 2. Nu-TRACKER Plus is a nutrient management tool developed and tested by Illini FS to track plant-available nutrients.

What comes first, tillage or application? Consider making anhydrous ammonia applications prior to primary tillage (subsoiling or deep chiseling). The risk of disturbing the zone of application (activity of nitrification inhibitor) is less than the risk of an uneven application and possible leakage due to a rough, shattered soil profile. Many primary tillage implements are designed to lift and drop with minimal soil stirring.

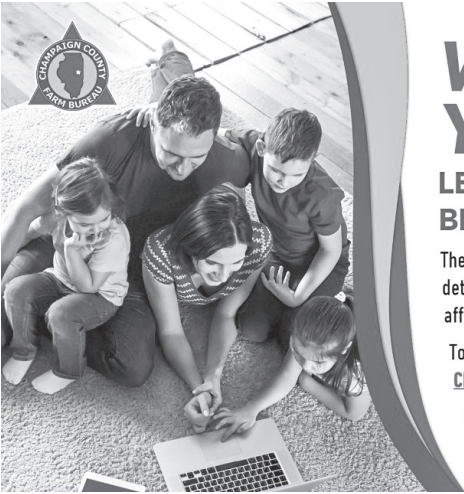
Fall Soil Sampling? Dry weather has created some challenges to sample collection this fall. The most significant concern is with depth of sampling. Visit with your local Illini FS Crop Specialist about robotic sample collection. Our preferred method of sample collection is with a high-speed auger, assuring consistency in depth of collection. Illini FS is reducing the price of robotic sampling this fall to partner with customers that want to collect soil samples. We feel this is the best way to protect the integrity of test results when sampling hard, dry soil.

Nutrient Loss Reduction Strategy. Reducing the amount of nutrients moving from farm fields and into water resources will not happen overnight. We need to discover and create new assessment tools that help optimize nutrient use with a focus on farm profitability. To truly be sustainable, improved nutrient stewardship must be accompanied by improved farm profitability, something that is very possible with technologies available in 2021. Ask your local Illini FS crop specialist what innovative products, practices and solutions we offer to provide you with winning results. Nu-TRACKER Plus is such a tool. Ask about how to participate or learn more about what it will provide.

"If we use it we won't lose it."

Harvest time provides more opportunities for accidents to occur. Practice safe operation of farm equipment. Have a safety meeting with those harvesting the crop with you. Define the ground rules to ensure safety. Schedule breaks throughout the day to stay alert. Stay aware of those around you, especially young children or people unfamiliar with farm equipment. Have a safe harvest season.

¹ Trademark of Corteva, Inc.
² Trademark of Koch Industries, Inc.



WE NEED YOUR HELP!

LET US KNOW ABOUT YOUR BROADBAND NEEDS.

The Champaign County Farm Bureau is conducting a survey to determine areas of our county that do not have sufficient or affordable broadband service.

To complete the survey, please visit surveymonkey.com/r/ChampaignBroadband or use this QR code.

If you are unable to access the website, you may also call 217-352-5235 to complete the survey via phone.



Grain Bin Safety Tips

1. ALWAYS lock out & tag out all moving equipment
2. ALWAYS guard or cover all floor openings
3. NEVER work alone in a bin
4. ALWAYS wear a harness & lifeline
5. DO NOT walk down the grain
6. Avoid loose-fitting or torn clothing while working on equipment



www.ilfb.org/safetyandhealth

Grain Bin Safety Facts & Figures

2019 Statistics

- 38 grain entrapment incidents were reported in 14 states (27% increase from 2018). 61% of those were fatal. Many more incidents remain unreported each year. (Source: Purdue University)
- 82% of all grain entrapment cases occurred in the Midwest, or Corn Belt.
- All documented 2019 cases involved males.
- The average age was 43.4 years old.

Did you know?

- In 4 seconds, an adult can sink knee-deep in the suction of flowing grain. At this point, he or she can't free themselves without help. (Source: Great Plains Center for Agricultural Health)
- Suffocation from engulfment is a leading cause of death in grain bins. (Source: OSHA)
- Flowing grain behaves like quicksand. An adult can be completely buried (engulfed) in 20 seconds. Most engulfed victims do not survive. (Source: Great Plains Center for Agricultural Health)
- From 2010 to 2019, there were 330 grain entrapment incidents reported. 47.6% of those were fatal. (Source: Purdue University)
- Most entrapment and engulfment events occur because workers enter a bin or storage structure to check on condition of grain or to address problems with grain flow due to spoiled grain or equipment malfunction. (Source: Great Plains Center for Agricultural Health)
- Around 80% of reported engulfments involve a person inside a bin or storage structure when grain-unloading equipment is running. Engulfments in flowing grain also occur in outdoor grain storage piles, grain wagons, rail cars, and semi-trailers that unload from the bottom. (Source: Great Plains Center for Agricultural Health)
- The best ways to prevent engulfment incidents are to eliminate the reasons for entering a bin in the first place, and to restrict unauthorized access by youth or other individuals who may be unaware of hazards. (Source: Great Plains Center for Agricultural Health)

CHAMPAIGN COUNTY FARM BUREAU NEWS

(USPS 099-840)

801 N. Country Fair Drive, Ste. A, Champaign, IL 61821
Published Monthly by the Champaign County Farm Bureau

801 N. Country Fair Drive, Ste. A,
Champaign, IL 61821

SUBSCRIPTION RATE -- \$3 PER YEAR

Periodicals Postage Paid at Champaign
(ISSN 1078-2966)

POSTMASTER: Send address changes to "Farm Bureau News" 801 N. Country Fair Drive,
Ste. A, Champaign IL 61821-2492

OFFICERS

Mike Briggs, Ludlow Township President
Dale Franzen, Rantoul Township.....1st Vice President
Carl Smith, Ayers Township..... 2nd Vice President
Brennon Breymeyer, Ogden Township Secretary
Derek Harms, Stanton Township Treasurer

Mark Hortin, Brown; Dale Tharp, Champaign; Chris Foran, Colfax; Virginia Busboom, Compromise; Kristi Pflugmacher, Condit; Jason Watson, Crittenden; Maynard Birkey, East Bend; Trent Wolken, Harwood/Kerr; Mark Jones, Hensley; Paul Hunsinger, Mahomet; Craig Anderson, Newcomb; Jim Kleiss, Pesotum; Andy Hughes, Philo; Justin Leerkamp, Raymond; Ryan Musson, Sadorus; Greg Knott, St. Joseph; Joann O'Connor, Scott; Benjamin Rice, Sidney; Steve Hammel, Somer; Brian Krukewitt, South Homer; Tom Swigart, Tolono; Landon Frye, Urbana; Joe Burke, Marketing Club Chair; Paulette Brock, Women's Committee Chair; Gerald Henry, Prime Timers Chair; Amanda Zwilling, Young Ag Leaders Chair

CHAMPAIGN COUNTY FARM BUREAU
Hours: 8:00 a.m. to 4:30 p.m. Monday-Friday
Manager -- Bradley Uken, FBCM
Assistant Manager -- Bailey Conrady
Communications Director -- Lesley Gooding
Administrative Assistant -- Brenda Wood
Membership & Outreach Coordinator -- Maggi Maxstadt
Ag In The Classroom Director -- Sarah Kaper
Foundation Director -- Kirk Builta

Contact us at (217) 352-5235
www.ccfarmbureau.org

PS Form 3526 Statement of Ownership, Management, and Circulation (All Periodicals Publications Except Requester Publications)

1. Publication Title CHAMP. CO. FARM BUREAU /CHAMPAIGN COUNTY FARM BUREAU NEWS	2. Publication Number 99840	ISSN 10782966	3. Filing Date 09/08/2020
4. Issue Frequency MONTHLY ONLY	5. Number of Issues Published Annually 12	6. Annual Subscription Price \$ 3.00	
7. Complete Mailing Address of Known Office of Publication 801 N COUNTRY FAIR DR STE A CHAMPAIGN, CHAMPAIGN, IL 61821-2492			Contact Person PERIODICALS MAILER Telephone (217) 352-5235
8. Complete Mailing Address of Headquarters or General Business Office of Publisher 801 N. Country Fair Dr, Ste. A Champaign, IL 61821-2492			
9. Full Names and Complete Mailing Addresses of Publisher, Editor, and Managing Editor			
Publisher (Name and complete mailing address) Champaign County Farm Bureau 801 N COUNTRY FAIR DR STE A CHAMPAIGN, IL 61821-2492			
Editor (Name and complete mailing address) Lesley Gooding 801 N COUNTRY FAIR DR STE A CHAMPAIGN, IL 61821-2492			
Managing Editor (Name and complete mailing address) Bradley Uken 801 N Country Fair Dr Ste A Champaign, IL 61821-2492			
10. Owner (Do not leave blank. If the publication is owned by a corporation, give the name and address of the corporation immediately followed by the names and addresses of all stockholders owning or holding 1 percent or more of the total amount of stock. If not owned by a corporation, give names and addresses of the individual owners. If owned by a partnership or other unincorporated firm, give its name and address as well as those of each individual owner. If the publication is published by a nonprofit organization, give its name and address.)			
Full Name		Complete Mailing Address	
Champaign County Farm Bureau		801 N. Country Fair Dr, Ste. A, Champaign, IL 61821-2492	
11. Known Bondholders, Mortgagees, and Other Security Holders Owning or Holding 1 Percent or More of Total Amount of Bonds, Mortgages, or Other Securities. If none, check box <input checked="" type="checkbox"/> None			
Full Name		Complete Mailing Address	
12. Tax Status (For completion by nonprofit organizations authorized to mail at nonprofit rates) The purpose, function, and nonprofit status of this organization and the exempt status for federal income tax purposes: <input checked="" type="checkbox"/> Has Not Changed During Preceding 12 Months <input type="checkbox"/> Has Changed During Preceding 12 Months (Publisher must submit explanation of change with this statement)			

PS Form 3526, September 2007 (Page 1)

PRIVACY NOTICE: See our privacy policy on www.usps.com

13. Publication Title CHAMP. CO. FARM BUREAU /CHAMPAIGN COUNTY FARM BUREAU NEWS		14. Issue Date for Circulation Data Below 09/08/2020	
15. Extend and Nature of Circulation		Average No. Copies Each Issue During Preceding 12 Months	No. Copies of Single Issue Published Nearest to Filing Date
a. Total Numbers of Copies (Net press run)		2271	2254
b. Paid Circulation (By Mail and Outside the Mail)	(1) Mailed Outside County Paid Subscriptions Stated on PS Form 3541 (include paid distribution above nominal rate, advertiser's proof copies, and exchange copies)	346	347
	(2) Mailed In-County Paid Subscriptions Stated on PS Form 3541 (include paid distribution above nominal rate, advertiser's proof copies, and exchange copies)	1926	1912
	(3) Paid Distribution Outside the Mails Including Sales Through Dealers and Carriers, Street Vendors, Counter Sales, and Other Paid Distribution Outside USPS	0	0
	(4) Paid Distribution by Other Classes of Mail Through the USPS (e.g. First-Class Mail)	0	0
c. Total Paid Distribution (Sum of 15b (1), (2), (3), (4))		2272	2259
d. Free or Nominal Rate Distribution (By Mail and Outside the Mail)	(1) Free or Nominal Rate Outside County Copies included on PS Form 3541	0	0
	(2) Free or Nominal Rate In-County Copies included on PS Form 3541	47	50
	(3) Free or Nominal Rate Copies Mailed at Other Classes Through the USPS (e.g. First-Class Mail)	0	0
	(4) Free or Nominal Rate Distribution Outside the Mail (Carriers or other means)	0	0
e. Total Free or Nominal Rate Distribution (Sum of 15d (1), (2), (3), (4))		47	50
f. Total Distribution (Sum of 15c and 15e)		2319	2309
g. Copies not Distributed		0	0
h. Total (Sum of 15f and 15g)		2319	2309
i. Percent Paid ((15c / 15f) times 100)		97.97 %	97.83 %
16. If total circulation includes electronic copies, report that circulation on lines below.			
a. Paid Electronic Copies		0	0
b. Total Paid Print Copies (Line 15C) + Paid Electronic Copies		0	0
c. Total Print Distribution (Line 15F) + Paid Electronic Copies		0	0
d. Percent Paid (Both Print and Electronic Copies)		0.00 %	0.00 %

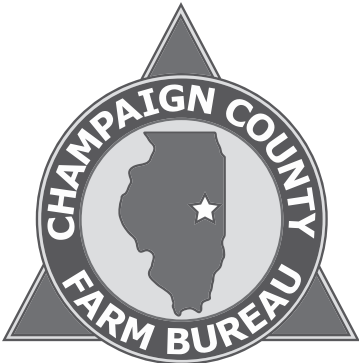
☐ I certify that 50% of all my distributed copies (Electronic and Print) are paid above a nominal price.

17. Publication of Statement of Ownership <input checked="" type="checkbox"/> If the publication is a general publication, publication of this statement is required. Will be printed in the 10/01/2020 issue of this publication. <input type="checkbox"/> Publication not required.		
18. Signature and Title of Editor, Publisher, Business Manager, or Owner Bradley Uken	Title Manager	Date 09/08/2020 13:43:31 PM

I certify that all information furnished on this form is true and complete. I understand that anyone who furnishes false or misleading information on this form or who omits material or information requested on the form may be subject to criminal sanctions (including fines and imprisonment) and/or civil sanctions (including civil penalties).

PS Form 3526, September 2007 (Page 2)

PRIVACY NOTICE: See our privacy policy on www.usps.com



Justin Leerkamp and Benjamin Rice, Co-Chairs of the Governmental Affairs Committee, recently awarded several local legislators with the Friend of Agriculture Award. Thank you for your continued support of the agricultural community.



L to R: Justin Leerkamp, Rep. Dan Caulkins and Benjamin Rice



L to R: Justin Leerkamp, Sen. Chapin Rose and Benjamin Rice



L to R: Justin Leerkamp, Rep. Mike Marron and Benjamin Rice



L to R: Justin Leerkamp, Rep. Brad Halbrook and Benjamin Rice



HONORING CCFB VETERANS

THE CCFB WOMEN'S COMMITTEE WOULD LIKE TO HONOR CCFB MILITARY VETERANS IN THE NOVEMBER NEWSLETTER. IF YOU WOULD LIKE TO BE HONORED OR HAVE A FAMILY MEMBER YOU WOULD LIKE TO HONOR PLEASE EMAIL THE FOLLOWING INFORMATION AND A PICTURE OF THE VETERAN TO MKT@ILLINOIS.EDU

NAME:
BRANCH:
YEARS OF SERVICE:

***IF YOU NEED HELP SENDING YOUR PICTURE, PLEASE CONTACT BAILEY @ 352-5235.**

WOMEN'S COMMITTEE RECIPE OF THE MONTH

Submitted by Gerry Windler

Zucchini & Craisin Muffins

Ingredients

- 3 c. Grated Zucchini
- 1 c. Oil
- 1 ½ c. Sugar
- 3 Eggs
- 1 t. Vanilla
- 1 ½ t. Baking Powder
- 1 t. Salt
- 1 t. Baking Soda
- 1 ½ t. Cinnamon (I use more)
- 1 ½ c. Flour
- 1 ½ c. Oatmeal
- 1 c. Nuts (optional)
- 1 c. Craisins (optional)

Directions

- Put all ingredients in mixer; Beat 4 minutes
- Use ice cream dipper to put in muffin tins (sprayed with Pam)
- Bake at 350
- Muffin tins 28 – 30 minutes
- 2 Loaves Bread /greased pan – 1 hour
- Makes approx. 23 muffins.

VETERAN'S DAY CALL FOR PHOTOS

*Thank you to all who have sent
in photos!*

**Deadline for ALL photos –
October 9, 2020**