



# Champaign County Farm Bureau News

Vol. 97, No. 4

801 N. Country Fair Drive, Suite A, Champaign, IL 61821

April, 2019

“Champaign County Farm Bureau will strive to assist families in agriculture by recognizing and responding to issues of concern while strengthening partnerships and improving farm family life for this and future generations.”

## Director Highlight - Greg Knott

Greg Knott is your new Champaign County Farm Bureau Board of Director representing St. Joseph Township. Greg is a Champaign County native who was born with a love for agriculture. Greg says, “I grew up near Tipton in St. Joseph Township on my Uncle and Aunt Lorin and Neva Wood’s farm. My parents later built a new home and we moved north of St. Joseph and we lived on the farm of my grandparents, Bob and Jean Maddock. Thus growing up with my family involved in agriculture, it was only natural that I would also develop an interest. At St. Joseph-Ogden High School I was in FFA and 4-H. I had a variety of 4-H and FFA projects including sheep, goats, chickens, rabbits and my favorite dog Midas, a Great Dane. Today I live on a tract of the farm that was first in our family in 1837 with my wife Brooke, daughter Riley who is an agriculture-communications major at Parkland transferring to UI next fall, and my son Hayden who is involved with FFA at St. Joseph-Ogden High School. Our family has lived in Champaign County for eight generations.”

Champaign County Farm Bureau board members spend a great deal of time exploring agriculture issues and working on legislative issues that affect agriculture. Greg is hoping to use his experience and background in public policy to help CCFB work on local issues. Trending agriculture issues and other areas of interest also drive board discussions. Greg’s introduction as a board member includes plans to take some time learning more about agriculture issues saying, “I have a great interest in the new technologies that are quickly evolving in agriculture. Specifically, all of the data collection that is now being done. Are farmers prepared to use all of this data? Do they have



Greg Knott

an understanding of ownership of the data? What about the privacy of their data? Are they sharing too much data?”

Board members also worry about issues affecting the local community in which we all live. Board members bring up new ideas and different concerns that can be addressed by the board. Greg says he is, “deeply concerned about the future of education in the state of Illinois including Pre-K to Higher Education. The State of Illinois has forced our local K-12 districts to overly rely on property taxes for their budgets. Higher education has suffered through 15 years plus of funding reductions. These issues have many of our young people looking to go out of state for college and many of them will never return. This will have long term impacts on Illinois.”

Along with the constant changes in agriculture comes excitement. Greg believes “Agriculture remains the single most important industry in the United States. Every one of us is involved in agriculture as consumers.

Continue Greg Knott page 3

## Director Highlight - Jason Watson

Jason Watson is your new CCFB Director serving Crittenden Township. Jason was born and raised on a farm and also spent his youth working on the farm. He admits he is still getting acclimated to his new role on the board and is soaking it all in.

Jason wants to focus on “continuing to provide a voice for family farm operations. I am also focused on trade and chemical laws and the importance of maintaining worldwide markets. I am concerned about preserving technology and making it available to everyone.”

Jason is excited to be involved in agriculture saying, “I love the tradition of agriculture, the quality of the people and the work ethic involved in it.”

Jason’s family tree is dotted by family members who have donated time and talent to the Farm Bureau. Jason’s grandpa, dad, and cousin are all retired CCFB board members, so as Jason says, “I am stepping



Jason Watson

up to the plate to take my turn.” Jason and his wife, Erin, live in rural Villa Grove with their son.

## Director Highlight - Mark Hortin



Mark Hortin

Mark Hortin, representing Brown Township, is a new face to the Champaign County Farm Bureau Board of Directors. Mark grew up in Albion, IL, and his parents still farm in Edwards County, Illinois. Farming is in Mark’s blood, “I have always really enjoyed grain farming as now the 6th generation Illinois farmer via both parent’s families. I was very fortunate to get to work with both sets of grandparents and parents growing up. After many years in agribusiness, Shanna and I got started farming mid-career in 2002.”

CCFB was able to ask Mark what he is currently most concerned about related to agriculture, “I think all the rapid consolidation in manufactured fertilizers, chemical companies, crop input retail, equipment sales, and crop production are not long term positives for our industry.” Board members work hard during their tenure to educate themselves about issues and also drive change through grassroots policy development. Mark says, “I am not sure what could or should be done to slow consolidation as a small government guy. I think Farm Bureau’s legislative initiatives and engagement are most critical as, even though Agriculture is Illinois’ largest employer, agriculture’s voting block is small and many urban dwellers/legislators don’t really understand farming or agriculture.”

A slew of issues faces those working in agriculture today. CCFB’s Board of Directors will work to tackle and address agriculture issues head-on. What will Mark be focusing on? “I think it’s great that agriculture is trying to stay in front of governmental regulatory reach with nutrient management and stewardship efforts ala 4 R principles. I think Farm Bureau can continue to be a leader with IFCA and others as per common goals.”

Agriculture is constantly changing and evolving, but with that comes excite-

Continue Mark Hortin page 3

## Director Highlight - Ryan Musson



Ryan Musson

Ryan Musson has been elected to the CCFB Board of Directors to represent Sadorus Township. Born and raised in Champaign County, Ryan works off the farm

as a mechanic at Birkey’s and farms with his dad and uncle.

In the past, Ryan has been involved with Young Ag Leaders. The role of CCFB board member is very new to Ryan after being persuaded to attend one meeting by his neighbor; Ryan was recruited to serve on the board. Ryan is currently focusing attention on WOTUS and doing what he can to educate himself and others on this hot button issue.

Ryan loves the farm and production agriculture saying “I love being out there, being able to plant something in the dirt and watch it grow.” This passion also leads Ryan to want to learn more about agronomy during his time on the board.

When Ryan isn’t working he enjoys attending tractor shows and has traveled to several shows including shows in Pennsylvania and Alabama. Ryan also enjoys skydiving. He has completed two tandem jumps and is working towards the magic number needed to jump solo!



# March Report

**President, Mike Briggs**



Heading into April we are all ready for some warm and dry weather. Planters are ready to roll as we get another growing season started. I hope that everyone was able to get all of their field work done in preparation for this season. Please remember to take the time to ensure your safety as the season ramps up. We are all busy and in a hurry to get seed in the ground but the most important thing is the safety of us and those around us.

At the farm bureau we had a number of good events in the month of March and appreciate all of you that were able to join us. We will be slowing down a little as planting ramps up but look for more events during the summer. April also brings the Easter season as well and I hope you can find some time to spend with your family during that time.

Sincerely,  
Mike Briggs

**Join the Prime Timers!**  
**April 11 starting at 10 a.m.**

**Featured Speaker: Sam Banks,**  
**Boys & Girls Club**

**Entertainment: Logan Kirby**



*Gerald Henry, Prime Timers Chairman*

**Meetings are held on the second Thursday of each month**

**Cost \$8 to attend**

**Call 352-5235 ahead of each meeting to reserve your spot**

**Mark your calendar for future meetings!**

**May 9**

**June 13**

**July 11**

## WOMEN'S COMMITTEE

**The Champaign County Farm Bureau Women's  
Committee is open to all women interested in agriculture**

### **Schedule of Events**

**April 8, 2019- 9:30AM- Regular Meeting**

**April 10, 2019- 10AM- Spring Fling**

**May 18, 2019- 9:30AM- Outreach Event- Playing it Safe**

**No regular meeting in May**

### *CCFB Calendar of Events* *April 2019*

|          |                          |           |
|----------|--------------------------|-----------|
| April 4  | Young Ag Leaders         | 6:30 p.m. |
| April 8  | Women's Committee        | 9:30 a.m. |
| April 9  | Premier Ladies Marketing | 9:30 a.m. |
| April 10 | Spring Fling             | 10 a.m.   |
| April 11 | Prime Timers             | 10 a.m.   |
| April 16 | Legislative Committee    | 7:30 a.m. |
| April 18 | Full Board               | 6:30 p.m. |
| April 22 | Life Line Screening      |           |

### *May 2019*

|           |                           |           |
|-----------|---------------------------|-----------|
| May 9     | Prime Timers              | 10 a.m.   |
| May 14    | Premier Ladies Marketing  | 9:30 a.m. |
| May 18    | Playing It Safe           | 9:30 a.m. |
| May 27    | Labor Day – Office Closed |           |
| May 28-29 | Defensive Driving         |           |

**\*\*Most committees do not meet in May due to planting season\*\***

**\*\*If you have questions please call the office at 217-352-5235\***



***Give your driving skills a tune up!***

## **Register for a Defensive Driving Course!**

***May 28 & 29 • 8:00 a.m. - Noon***

***\$17 per person***

**Location - CCFB Auditorium,**

**801 N Country Fair Drive,**

**Champaign, IL**

***To register call 217-352-5235***

## **Women's Committee Spring Fling**

April brings a very special day for all women of the Farm Bureau. Our 2019 Spring Fling event will be held on Wednesday, April 10th starting at 10am at the Champaign County Farm Bureau auditorium. A representative of Champaign County Crime Stoppers will be our first guest of the day. This organization has been a part of our community for 31 years. It has enabled the resolution of over 1100 cases. Rewards have been paid to tipsters in excess of \$56,000. You can expect to learn more information about CrimeStoppers, as well as information on how to avoid becoming a victim of crime.

Our second featured group will provide both music and information about their unique mission. The Care Choir from Sarah Bush Lincoln, in association with Eastern IL University Academy of Lifelong Learning, will sing for us, and will also share information about their contribution to long term facilities and hospice patients.

What day would be complete without lunch? As usual, the Women's Committee will serve your meal, where you will have an opportunity to visit with other Farm Bureau Women and their friends seated at your table.

Our day will end with a presentation by Natalie Kenny Marquez with a focus on Heritage Recipes. Natalie is from a Centennial farm family, where her children mark the eighth generation to reside in Champaign County. She has had diverse experience in municipal government, marketing, and running Urbana's Market at the Square for five seasons. She is owner of Grow Marketing & Communications LLC and she also blogs at Family to Table. She will share information on heritage recipes gleaned from meticulously kept family records.

You must make a reservation with Brenda Wood at the Farm Bureau by calling 352-5235 no later than April 5th. Your cost to attend is only \$5.00. Register early to assure your participation.

## **Young Ag Leaders**

***April 4th at 6:30 p.m.***

**Champaign County**

**Farm Bureau Auditorium**



# FFA Highlight – Rantoul Township High School

by Megan Vogt, FFA Advisor



The Rantoul FFA Chapter has had a busy and successful year so far. FFA members have been busy preparing for and competing in a variety of Career Development Events. Some of those have included Job Interview and Public Speaking, Livestock Judging, State Dairy Products, Parliamentary Procedure and Poultry Evaluation. Freshman, Kennedy Carico, place first in the Creed Speaking competition at the section level and advances to the district competition in early April. Other achievements from some of our students this semester include Lexie Wilken, who has been recommended to the state to receive her FFA State Degree

at State Convention in June. The State FFA Degree is the highest award an FFA member can achieve at the state level and is achieved through hard work and dedication to one's Supervised Agriculture Experience. Adam Crites and Lexie Wilken both interview at the section level with their record book projects and advanced to the district interviews where Adam placed second.

February brought a lot of activities for the chapter. Some of the most fun and memorable came during

National FFA Week. We kicked off the week with a chapter fun day at Elevate Trampoline Park in Champaign.



During the rest of the week, FFA members prepared breakfast for the teachers at Rantoul Township High School to show their appreciation for all that they do for our student throughout the year. Members also competed in a friendly dodgeball tournament and enjoyed a lunch cookout to wrap up the week.

The end of the year is quickly approaching, but the Rantoul FFA Chapter still has many events on the horizon. The Ag Expo Committee is in full planning mode to bring a great event to the area this year for the

local grade schools and community members. The Rantoul FFA Ag Expo is an opportunity for students to get up close and learn about the various aspects of the agriculture industry; from farm animals to tractors and machinery. We will also be hosting an end of the year awards banquet where we will recognize and honor our FFA members for all of their accomplishments and our supporters for all that they do for our chapter. It's been a fun year so far and we are excited for what's still to come!



## 2019 Sweepstakes

Enter the Built Ford Proud Sweepstakes\* for your chance to win a 2-year lease on a new Ford vehicle! Text the word SWEEPS to 46786\*\* to enter. Or enter using this link: <https://www.fordspecialoffer.com/FarmBureau/Sweeps>

### Disclaimers:

\*NO PURCHASE NECESSARY. A PURCHASE WILL NOT INCREASE YOUR CHANCES OF WINNING. MUST BE LEGAL RESIDENT OF U.S. OR D.C., 21 YEARS OR OLDER WITH VALID DRIVER'S LICENSE TO ENTER AND A CURRENT FARM BUREAU MEMBER. ADDITIONAL RESTRICTIONS MAY APPLY. Void where prohibited. Sweepstakes ends 9/30/2019. For entry and official rules with complete eligibility, prize description and other details, visit [FordFarmBureauAdvantage.com](http://FordFarmBureauAdvantage.com). Sponsored by Ford Motor Company, One American Road, Dearborn, MI 48126.

\*\*Autodialed marketing messages will be sent to the number provided. Consent is not a condition of purchase or entry. Message and data rates may apply.

### Greg Knott continued from Page 1

Farm Bureau has both an obligation and opportunity to help educate the public of what is really happening out on the farms. Farmers today are the most productive and efficient in history. The opportunity to help tell this story is exciting."

According to Greg, his journey with the farm bureau began many years ago, "I attended the Champaign County Farm Bureau Leadership Academy in 2011 and was given a Friend of Agriculture award three times by CCFB when I was a member of the Champaign County Board. My Great-Grandfather Earl Maddock was CCFB President in 1950-51. Farm Bureau is simply one of the greatest member-driven organizations that can help shape policy and influence the future of our communities."

On a personal note, Greg stays busy in the community, at home, and with hobbies, "I have served on the Board of Trustees at Parkland College since 2011 and enjoy helping make an impact for all of our students. It's exciting to attend graduation each year and see the joy of success on the faces of

the graduates. This spring I will be able to give my daughter Riley her diploma as she graduates from Parkland. My brother and I also have an antique tractor collection with an emphasis on Allis-Chalmers brand. At present we have 15 tractors in the collection."

### Mark Hortin continued from Page 1

ment! Mark says, "I like the fact that agriculture offers such diverse career opportunities to match personal aptitudes and interests and that the agriculture job market is strong. I know many outstanding young people making me think the future is bright."

Everyone's path to Farm Bureau involvement is different, but we are so happy to have engaged volunteers making a difference and Mark has his own story, "I had chance to interact with members, leaders, and staff as Shanna's spouse and came to better appreciate Farm Bureau....plus I read Farm Week every week! I appreciate being recruited and hope I can contribute to continued CCFB success."

Mark and his wife, Shanna, have three children. They like to take family trips. Mark enjoys infrequent golf and is a lifelong Illini sports fan and alum.





CCFBFOUNDATION.COM



/CCFBFOUNDATION



/CCFB\_FOUNDATION



**KIRK BULTA**  
Executive Director



**SARAH KAPER**  
Earth Partners Director

## Mitchell Elected Foundation Board President

After adding four new members in January, the CCFB Foundation Board of Directors has elected its 2019 leadership team. The 15-member board of directors added four new members. Joining the board is Robert Carlson, CEO of Premier Cooperative, Amy Sage of The Anderson's Inc, David Shenaut of Bayer, and Tom Swigart of Swigart Farms.

Cory Mitchell was elected by the board to serve as its President. Mitchell, a 1990 recipient of the CCFB Foundation scholarship, is the first former scholar to lead the organization. Mitchell tells us that he's excited to lead the Foundation and to give back to the organization who believed in him as a college student.

Joining Mitchell on the executive team is Vice-President Jessica Patzwith of Illinois FBFM and Secretary Cheryl Mitchell of Starfire Industries. Re-elected to the post of Treasurer is Jason Bartell of Bartell Powell LLP.

Foundation Executive Director, Kirk Bulta, says that while it's exciting to add new faces to the Foundation's Board, it's a bittersweet moment as four members retire from the Board. Annie Murray-Easterday, owner of Pear Tree Estate, Callie Heidbreder of Gifford State Bank, Adam Watson of Watson's Top Crop, and former Board President Brian McCoy of Birkey's all left the Foundation Board at the end of their terms in January.

"Our retiring board members leave big shoes to fill" says Bulta. Easterday, Heidbreder, McCoy and Watson had all served the board in various leadership positions throughout their time with the Foundation.



*Cory Mitchell of Farm Credit Illinois was elected President of the Champaign County Farm Bureau Foundation. Mitchell is the first former Foundation scholarship recipient to lead the foundation board of directors.*

Their presence will be missed around our board room."

The new board of directors quickly began making an impact on the community. The board recently huddled with staff in a board retreat to update the organization's strategic plan and set the mission, vision, and values of the Foundation.

The Foundation Board of Directors and staff pride themselves on providing educational opportunities that impact the future of the food and agricultural industry throughout Champaign County, and around the world.



*As the Foundation Board was re-organized, new leadership was elected. Serving left to right are: Cory Mitchell, President; Cheryl Mitchell, Secretary; Jessica Patzwith, Vice-President; and Jason Bartell, Treasurer.*

## EARTH PARTNERS

Making sure your local students are ... **GROUNDING IN AG!**

Here is where we have been recently...

### Champaign

- 4<sup>th</sup> grade: Sustainable Agriculture Practices – food, fuel, fibers
- 3<sup>rd</sup> grade: Pollination lesson led by Sigma Alpha



### Fisher

Hey Fisher! How can we bring agriculture to your classroom this Spring?

### Gifford

- K-1<sup>st</sup>-2<sup>nd</sup> grade: Sustainable Agriculture Practices – food, fuel, fibers

### Heritage

Last month: FFA "Students as Teachers" lesson, K-4<sup>th</sup> lessons on livestock, nutrition, and Illinois

### Ludlow

- K-2<sup>nd</sup> grade: Livestock - "What do they need?"
- 7<sup>th</sup>-8<sup>th</sup> grade: "Milk...It's not just for drinking!" - lesson on making milk plastics

### Mahomet

- 3<sup>rd</sup> & 4<sup>th</sup> grade: Sustainable Agriculture Practices – food, fuel, fibers

### Prairieview-Ogden

Last month: K-1<sup>st</sup> lesson on pizza, 2<sup>nd</sup> grade – "What's in a Tootsie Roll?", 3<sup>rd</sup>-4<sup>th</sup> grade renewable resources lessons

### Rantoul

- K-1<sup>st</sup>: Sustainable Agriculture Practices – food, fuel, fibers
- 5<sup>th</sup> grade: Soil STEM Projects – Lessons from the Dust Bowl and the importance of taking care of our precious resources

### St. Joseph

We will be visiting 4<sup>th</sup> grade after spring break for rotating lessons on:

- IL Landmarks,
- Soybean Babies
- "Where does pizza come from?"
- Taking Care of Natural Resources

### Thomasboro

We are looking forward to visiting 4<sup>th</sup> grade in April! Thanks Mrs. Breymer!

### Unity

- 2<sup>nd</sup> grade: Pollination and Soybean Babies lessons, and resources for NGSS science standards

### Urbana

- 15 incubators, egg turners, and supplies go out following spring break to elementary schools studying embryology
- Pre-K students at Urbana Early Childhood begin embryology unit after spring break

**696** – Students received lessons in agriculture

**48** – Teachers received free ag related teaching resources

**1,550** -- Ag Mags distributed



**Topics:** **Chocolate** (sustainable farming practices), **Livestock** (cows, chickens, sheep, goats, pigs), **Soil** (the Dust Bowl and lessons we learned), **Embryology** (egg development and hatching chicks), **Pollination** (why it is important to agriculture), **Dairy** (other uses for milk – milk plastics)

**Quote of the Month:** "Earth Partners - Ag in the Classroom offers my students a window into a world they have never noticed. While they may have driven by a corn field, or seen a combine in the field, they have never thought about it. The programs have been fun, interactive, age appropriate, and most of all educational. I would have Ag in the Classroom back any day."

-Tiffany Clark - 4<sup>th</sup> Grade Teacher - Urbana School District



### PLANT A SEED!

Encourage your school administrators and teachers to utilize our **FREE** resources!

## Giving with Impact

12 out of the box ideas to leave your mark on the CCFB Foundation

This 12-part series will highlight creative ways to provide real impact to the future of agriculture in our community. From Earth Partners to our Farm Bureau Scholars; Together we can provide life changing impact to students throughout Champaign County.

## Educational Experiences

For the past 25 years Earth Partners has provided agriculture in the classroom presentations, field trips, and educational resources to teachers in Champaign County. These lessons are presented in a manner which conveys truth and builds trust in modern agriculture; telling the story of our central Illinois farmers in a manner in which students can easily comprehend.

From the growing cycle of plants, to livestock, conservation, pumpkins, marketing and more; these lessons present

agriculture while also teaching students about mathematics, English language arts, science, technology and history. Our lessons can fit nearly any curriculum and class level. Lessons come to life for students of all ages when they are able to attend a field trip or experience hands-on laboratory work. This is the special programming that students will remember and continue to talk about.

What topic is important to you? Sponsoring a field trip, experience, or classroom lesson close to your heart could plant

an interest in agriculture in a local student. Your support assists Earth Partners Director Sarah Kaper in the development of programming which supports our industry, and touches every school in Champaign County. It's our goal to provide educational resources so that every teacher, every classroom and every student in Champaign County is grounded in agriculture. Your sponsorships play a big role in this endeavor!

By providing the gift of education to Champaign County students your impact

will be felt for decades to come. Funding educational resources that directly impact our students is easier and more affordable than you might think! If you'd like more information on giving the gift of education, or how you can help make a difference, please contact CCFB Foundation Executive Director, Kirk Bulta at [kirk@ccfarmbureau.com](mailto:kirk@ccfarmbureau.com) or by calling our office at 217-352-5235.





**Nathan Hubbard**  
COUNTRY Financial  
Agency Manager



**Rhonda Wagner**  
Administrative Assistant  
Champaign Agency

## Fake It ‘Til You Make It: Americans Are Buying Homes But Can’t Afford The Down Payment

*Fifty-six percent of Americans aspire to buy a home, but forty percent cite affording a down payment as the greatest financial barrier to homeownership*

March 12, 2019

**BLOOMINGTON, Ill.** – The American Dream of owning a home is still alive, as millennials are prioritizing purchasing a home ahead of getting married, paying off debt and traveling, according to the latest COUNTRY Financial Security Index®.

However, although millennials hope to own a home one day, many say the down payment is their biggest barrier when it comes to purchasing. In fact, forty-six percent of millennials and forty percent of Americans overall cited affording a down payment as the greatest financial barrier to homeownership, with the second most cited reason for Americans overall being that rent is more affordable (18 percent).

“Purchasing a home is much more than paying for a place to live; it’s a major investment of both time and money,” said Doyle Williams, an executive vice president at COUNTRY Financial®. “Homebuyers should look beyond the initial cost of the down payment to the expenses of maintaining and protecting a home before making the investment. Some may not think it’s worth the cost and effort at this time in their lives, but for many, owning a home is worthwhile.”

### Americans Skimping on the Down Payment

Although the down payment continues to be a barrier for most Americans, it’s not stopping them from purchasing a home. In fact, many Americans reported making small down payments to afford their homes.

More than half of Americans (54 percent) reported putting down 10 percent or less of their mortgage loan on a new home purchase, while one in three (36 percent) said they put five percent or less of their mortgage loan on their down payment.

### Millennials Eager to Buy Homes

When it comes to age, millennials are the most eager homebuyers of the bunch. They are even the most likely to purchase a home in the next one to two years when compared with other age groups: 18-34 (21 percent), 35-49 (6 percent), 50-64 (6 percent), 65+ (5 percent).

If given \$25,000 tomorrow, more millennials (26 percent) would rather put this newfound money toward a down payment for a new home or pay off a mortgage than use it to pay off their credit card debts (17 percent) or student loan debts (16 percent). By contrast, most Americans between the ages of 35-49 would rather pay off their credit card debt (33 percent) or invest it (20 percent).

While buying a home is a priority for millennials, other age groups have different concerns. Most Americans aged 35-49 selected paying off debt (67 percent) as their greatest priority, while those aged 50-64 selected retiring (72 percent). For the majority of Americans overall, paying off debt is a top concern.

### Renting vs. Buying

Home ownership is a top priority for most millennials, but the stark reality is that two-thirds of homeowners are still working to pay off their mortgages.

Eleven percent of Americans say that 40 percent or more of their salary goes toward their monthly mortgage payments, while one in five American renters (21 percent) claim to spend 40 percent or more of their salary on rent.

Almost half of American renters (47 percent) say they believe a mortgage payment would be less expensive than their rent, but 24 percent admit they have no plans to purchase a home within the next four years. This discrepancy potentially stems from half of Americans thinking it would take four or more years to save up for a down payment.

COUNTRY Financial’s Security Index also found that many Americans are working to pay off their mortgage into retirement age. In fact, more than one in three Americans are still doing so after they turn 65 years old (33 percent). Nearly seven in 10 Americans ages 50-64 are paying off a mortgage (68 percent), and eight in 10 Americans ages 49 or younger are as well.

“It’s important for those nearing retirement to consider how much home they need for their lifestyle, and how much maintenance they’re willing to take on,” continued Williams. Nonetheless, only about six percent of American homeowners regret or somewhat regret purchasing a home, suggesting that despite the extensive time it can take to pay off a mortgage, Americans still feel that it is a worthwhile investment.



**Dan Punkay**  
328-0023



**Travis Heath**  
352-4555



**Keith Garrett**  
485-3010



**Jessie DeHaan**  
352-3466



**Stan Ochs**  
352-3296



**Terry Hill**  
469-9800



**Jim Nelson**  
892-4479



**Aaron Wheeler**  
586-6170



**Scott Jackson**  
359-9335



**Dawn Babb**  
892-4479



**Andrew Deedrich**  
359-3941



**Steve Derry**  
352-2655



**Bret Kroencke**  
359-9391



**Chuck Rippey**  
586-5030



**Chris Greenwold**  
355-8675



**Dan Duitsman**  
469-2033



**John May**  
352-3341



**Austin Beaty**  
217-352-0012





**MARK THORNSBROUGH,**  
**GENERAL MANAGER**

## From The Field

by Dr. Howard Brown

### SPRING POSSIBILITIES

Uniform planting depth, soil firmness, down pressure and plant spacing have been the focus of many farmers over the past few years. Technology has provided the opportunity to do a better job of controlling these physical factors that may influence uniformity of emergence. Unfortunately, there remain several uncontrollable challenges to the planted seed and young seedling before it becomes an independent plant. Since many of the early challenges are driven by the environment, weather conditions prior to and following planting will determine the extent of the challenges. Below are some of the more common early disease issues the 2019 crop may face.

### SOILBORNE DISEASES

**PYTHIUM (Corn/Soybeans).** Pythium is the most common and earliest of the soil pathogens that can infect both corn and soybean seeds and seedlings prior to or soon after emergence. It is a common threat to most planted seeds and seedlings. The fungal pathogen is favored by cool, saturated soils. The pathogen requires water to move to the plant tissue, the reason it is called a “water mold”. Pythium fungi overwinter in soil and plant debris. Saturate soil provides the moisture necessary to germinate the spores and provide a medium to swim to the seed or young seedling. Only 3 to 4 hours of saturated soil is enough time to allow for the disease to be activated. Exudate from the germinating seed and roots help induce spores to germinate. Damage to seeds increase the risk of infection, since there is a larger amount of seed exudate and the damaged area allows for direct pathogen entry. Allowing for warmer a warmer soil environment, avoiding saturated soil conditions are too cultural practices that should help minimize the risk of infection. Seed treatments can also help. Visit with your local Illini FS Crop Specialist for more information about available seed treatments for Pythium management. *For more information visit: <http://bulletin.ipm.illinois.edu/pastpest/articles/200106g.html>*

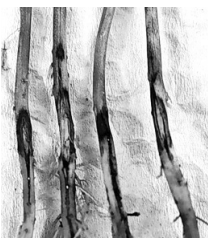


*Pythium in Corn.* Infection of the mesocotyl can result in loss of the primary root system, causing the developing seedling to die, unless adequate secondary roots have developed. Corn plants during the first few weeks after emergence may grow more slowly and appear less healthy when only their primary roots are infected with Pythium.



*Pythium in Soybeans.* Pythium is one of three pathogens that make up the Damping-Off Complex. The pathogen causes rotting of the Rotting of the germinating seed and seedling. Rotted seeds are soft and fail to germinate. Seedling damping-off symptoms include rotting of the cotyledons, a soft-rotting of the hypocotyl, and/or rotting of the root system. After emergence, the stem and seedling may die, and their tissue will appear soft and rotted.

**RHIZOCTONIA (Soybeans).** Rhizoctonia Root and Stem Rot is a fungal pathogen that is considered a common early season disease of soybeans. Stand losses can range from insignificant to as much as 50%. Stand loss usually appears in small patches or within rows. The disease commonly appears in areas of early season growth stress, such as moderately wet areas, herbicide injury, and/or areas impacted by soil compaction. The disease appears as shrunken, reddish brown lesions or cankers developing at or near the soil line. Lesions destroy vascular tissue and can girdle the young seedling (cut-off water flow), or loss of roots. Affected plants will express drought symptoms (wilting) when soils start to dry. Infected plants may not die but may remain stunted. Yield reductions are generally slight (up to 10%) where stunting occurs. If stand losses are extensive, yields may be significantly reduced. Consider protectant fungicide seed treatments to help with control. Visit with your local Illini FS



Crop Specialist for specific treatments. For more information visit: <http://ipm.illinois.edu/diseases/series500/rpd511/index.html>.



**PHYTOPHTHORA (Soybeans).** Phytophthora Root Rot is responsible for damping-off or seedling blight that can significantly reduce stands. Infected plants are sometimes misdiagnosed as caused by environmental conditions or skips during planting. The disease is considered a water mold, requiring a period of saturated soil for infection to take place (swims to site of infection). It is most commonly found in areas that are the most likely to stay wet for extended periods (low areas). Ideal conditions for disease development would be a period of wet weather followed by drying period with warm soil temperatures. Infected plants may exhibit few or no symptoms early but may die as plants move into a period of stress, such as stress caused by drought or seed fill. Varietal resistance to this pathogen is the best way to minimize impact. A seed treatment can also serve as a defense against the disease. Visit with your local Illini FS Crop Specialist for seed treatment options. For more information visit: <https://crops.extension.iastate.edu/phytophthora-root-and-stem-rot-0>.

**CONSIDER SOIL TESTING THIS SPRING.** If you historically have collected soil samples after harvest, consider switching to Spring sampling cycle. Collecting samples in May provides more consistent soil moisture improving reliability of the tests (pH and potassium). Testing in the Spring also provides plenty of time over the summer months to evaluate the results and create the next season’s nutrient management plans. Illini FS has a special soil sampling program available this Spring that will provide a closer look at soil nutrient content at no additional cost. The new program compliments our N-TRACKER Plus Program by identifying areas of a field best suited to establishing a nutrient-tracking site. Visit with your local Illini FS Crop Specialist if you have in interest in making the switch or would like to learn more about the special offer.

## Around the county with Illini FS



*Illini FS loved hosting these Univeristy of Illinois students in March! They joined us at our Leverett location for some hands on learning! #FSProud*



*Tolono’s Ryan Craig speaking with Dekalb seed reps. One of Illini FS’s customers, Keith Reinhart was awarded as one of the most successful corn growers in Illinois this year.*



# TRIP & TOUR HIGHLIGHT

JUNE 3-6, 2019

4 DAYS & 3 NIGHTS TRIP TO SHIPSEWANA, IN

**Cost per person: \$675.00**

Trip includes: Hotel, motor coach transportation, 3 shows, tours with step on guide, Grab Bag-5goodies, 3-breakfasts and 2-dinners and 1-lunch

**Deadline to register, be paid in full or cancel: May 3, 2019**

Travel with Champaign County Farm Bureau to the northern Indiana town of Shipshewana. Once home to a group of Potawatomie Indians, Shipshewana has become the “heart of northern Indiana Amish country.” It is now home to the 3rd largest Amish and Mennonite community in the U.S. As a visitor, you will be able to shop at local merchants, explore a simple way of life, and take in some great shows. This trip is a must do for you and your friends.

Enjoy Three Shows at the Blue Gate Theatre and Tour the Amish Country

## A Simple Sanctuary

She prayed the day would never come, but when her past comes calling, Melissa James has no choice but to flee. Pursued and living on the run, she finds desperate sanctuary and surprising friendship in Amish country. Part suspense, part romance, A Simple Sanctuary is a compelling story of love tested, the cost of freedom, and the solace found in true community.

## Larry Gatlin & the Gatlin Brothers

The Gatlin Brothers have been dazzling audiences for more than 60 years. It all began in Abilene, Texas in 1955, when Larry was six, Steve was four, and Rudy was two. Since those days, the road the brothers have plowed has won them countless awards and has taken them to numerous concert halls, festival stages, national television shows and even the White House on several occasions. The brothers have seen their music top the charts and touch the lives of fans of all ages.



## Daniel O'Donnell with Special Guest Mary Duff Live in Concert

The affable and unassuming international singing star Daniel O'Donnell, one of Ireland's best known performers from Australia to Alaska, continues to push out the boundaries of his career both on stage and TV in 2018 and 2019.

Other trip highlights include:

- Shopping at the Flea Market
- Downtown free time
- Step on Guide/Grab Bag Tour - Amish candy maker, Carolyn's Kitchen,
- Quilt Garden & many other stops on the tour
- Amish Wedding Program & Wedding Fest
- Jayco RV Corporation factory tour

Great friends, great shows, and a lot of sightseeing...what more could you ask for? Call CCFB for more details at 217-352-5235.



## Talking Points of the Month

### Topic: Dicamba

#### CHAMPAIGN COUNTY FARM BUREAU NEWS

(USPS 099-840)

801 N. Country Fair Drive, Ste. A, Champaign, IL 61821  
Published Monthly by the Champaign County Farm Bureau  
801 N. Country Fair Drive, Ste. A,  
Champaign, IL 61821

SUBSCRIPTION RATE -- \$3 PER YEAR

Periodicals Postage Paid at Champaign  
(ISSN 1078-2966)

POSTMASTER: Send address changes to "Farm Bureau News" 801 N. Country Fair Drive,  
Ste. A, Champaign IL 61821-2492

#### OFFICERS

Mike Briggs, Ludlow Township.....President  
Adam Watson, Crittenden Township.....1st Vice President  
Carl Smith, Ayers Township.....2nd Vice President  
Brennon Breymeyer, Ogden Township.....Secretary  
Lee Waters, Treasurer.....Treasurer

Dale Tharp, Champaign; Chris Foran, Colfax; Kristi Pflugmacher, Condit; Mitchell Heap, East Bend; Trent Wolken, Harwood/Kerr; Bob Furtney, Hensley; Christi DeLaney, Newcomb; Jim Kleiss, Pesotum; Andy Hughes, Philo; Justin Leerkamp, Raymond; Loretta Stoerger, Sadorus; Paul Berbaum, Scott; Benjamin Rice, Sidney; Steve Hammel, Somer; Brian Krukewitt, South Homer; Derek Harms, Stanton; Tom Swigart, Tolono; Dale Franzen, Rantoul; Paul Routh, Urbana; Joe Burke, Marketing Committee Chairman; Paulette Brock, Women's Committee Chair; Gerald Henry, Prime Timers; Lynn Doran, Young Ag Leaders

CHAMPAIGN COUNTY FARM BUREAU  
Hours: 8:00 a.m. to 4:30 p.m. Monday-Friday  
Manager -- Bradley Uken, FBCM  
Assistant Manager -- Bailey Edenburn  
Communications Director -- Lesley Gooding  
Administrative Assistant -- Brenda Wood  
Membership Director -- Deidra Ochs  
Earth Partners Director -- Sarah Kaper  
Foundation Director -- Kirk Builtta

Contact us at (217) 352-5235  
www.ccfarmbureau.com

Have you found yourself standing around the coffee pot at the local gas station and debating with friends and neighbors about agriculture issues? Each month CCFB will highlight a trending agriculture topic and provide you with talking points. Stay up to date with the most recent information from Champaign County Farm Bureau and the Illinois Farm Bureau.



- Farmers need a variety of tools to protect our crops from problematic weeds. Dicamba products are an important part of that toolbox.
- We are disappointed that these products have caused issues in our state and that there are concerns from the public about agricultural practices
- Farmers use herbicides re-

sponsibly, which includes:

- Using the appropriate product for the weed problem at hand
- Using integrated pest management practices so tools retain their efficacy (including using multiple modes of action, different timings, cover crops and other weed management tools)
- Pesticide applicators are trained and must pass certifications for the work they plan to do, and we support those program because we want the public to know we are knowledgeable
- More than 11,000 farmers and pesticide applicators were trained last year on the proper use of these products and we will continue to participate in training opportunities
- Farmers utilize tools like FieldWatch to monitor for sensitive areas around them, in addition to communicating with neighbors of all kinds – farm and non-farm to have a successful season.

# Happy Spring



Farmers care about nutrients, just like

# MOM

Minimize - Optimize - Maximize

For a sustainable tomorrow





# CCFB Members in Action



*FarmTEK*



*Mahomet Drivers Ed*



*Rachel Coventry of Curtis Orchard spoke to the Women's Committee about honey and beekeeping*




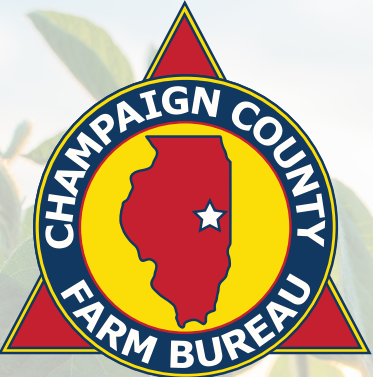
*CCFB Director Kristi Pflugmacher discusses her family's ag business with University of Illinois College of ACES students.*

## THE CHAMPAIGN COUNTY FARM BUREAU

Proudly Salutes the Farm Leader of the Year!



**Dan Schaefer**  
Tolono, Illinois





Champaign County Farm Bureau will strive to assist families in agriculture by recognizing and responding to issues of concern while strengthening partnerships and improving farm family life for this and future generations.

**THE CHAMPAIGN COUNTY FARM BUREAU**  
801 North Country Fair Drive, Suite A | Champaign, Illinois 61821  
Phone: 217-352-5235 | [www.ccfarmbureau.com](http://www.ccfarmbureau.com)



*Marketing Meeting featuring Curt Kimmel from Bates Commodities, Travis Spohr from RAM Agri-Marketing, & Scott Jones from Ludlow Co-op & moderator Gale Cunningham from WYXY Classic 99.1.*