



Champaign County Farm Bureau News

Vol. 95, No. 6 801 N. Country Fair Drive, Suite A, Champaign, IL 61821 June, 2017

“Champaign County Farm Bureau will strive to assist families in agriculture by recognizing and responding to issues of concern while strengthening partnerships and improving farm family life for this and future generations.”

FB ACT *Making an Impact*

By: Lesley Gooding

Champaign County Farm Bureau wants YOU to become an advocate for agriculture. Join FB ACT let your voice be heard by influencing legislators on a local and national level. The program is open to all Farm Bureau members for example, Champaign County Farm Bureau member, Brad Zwilling, was introduced to FB ACT a

few years ago at a Young Leader meeting. He enrolled in FB and has continued to stay involved in the program saying “To me the program was a great way for me to communicate with legislators about issues that were important to me. As I became more involved in farm bureau, I learned more about FB ACT. Action requests are only sent out when there is an important issue facing agriculture.”

Enrolling in FB ACT does guarantee that you will have a direct link to every issue. Why get involved? Friends of agriculture are falling short and being out contacted by the opposition on several issues affecting the agriculture industry. Now is the time to make a difference and speak out for agriculture issues. Brad Zwilling has a great track record with very few missed FB ACT requests and says “Yes, there have been some issues that didn’t directly affect me, but I felt that I needed to respond to those FB ACT requests to send a strong, unified voice from agriculture regarding those issues. With as small as voice that agriculture has, every contact we can make is important.”

Don’t have much time? Don’t worry! According to www.ifb.org, FB ACT members are “expected to do two things: vote and respond to action requests by emailing or calling your elected officials on key agricultural issues. Your involvement in additional activities will help to build your relationship with your elected officials and make these tasks easier, but most find these two tasks to be pretty simple ways to protect their farms.” Brad Zwilling, CCFB Member, stresses “FB ACT is very easy and a good way to keep involved in what issues are being addressed at the state and national level. The action requests can come via text or email and it tells you exactly what the issue is, who to contact and the deadline. Then you can go to the Illinois Farm Bureau Legislative Action Center, find your elected officials and how to contact them.”

FB ACT strives to make the process of contacting your legislators easy, convenient, and effective. Participating FB ACT members are able to refer to issue specific talking points when making contacts. Contacts can

be made via phone or email and can be done throughout the day. As someone who has been doing this for a while Brad suggests “the best time to respond to the action request as soon as you receive it!” Whether you are already an FB

ACT member or just curious about the program, call Champaign County Farm Bureau at 217-352-5235 and learn what new opportunities await for you. Learn how you can act today and win tomorrow.

Nutrient Management Pilot Program

By: Lesley Gooding



In April, the Champaign County Farm Bureau announced it had joined forces with Illini FS to launch a pilot project that will create a Nutrient Stewardship Strategy for participating producers. Six participating producers are developing a Nutrient Management Strategy based upon four components- Assess, Plan, Learn, and Commit.

Each month Champaign County Farm Bureau will get a different perspective on the program from varied participants. This month we are focusing on the why. Why are producers participating in the program and why is it important to them and to the future of agriculture? Participants agree the program will lead to more informed nitrogen decisions. One Champaign County producer says he is participating “for the opportunity to do some in depth nitrogen testing.” Another participant states, “I signed up to get another perspective of actual lab testing to see how our nitrogen is moving or staying in the soil profile. There are many computer models that use weather to determine nitrogen and I feel that actual testing may be a better way to determine actual nitrogen levels.”

Data gleaned from the Nutrient Management Strategy project will help producers be more efficient with nitrogen use. A farmer in southern Champaign County says this study is important for farmers to understand “why and how much nitrogen we apply.”

The study as a whole is impor-

tant to agriculture! A producer from eastern Champaign County says data results will show “farmers are working to reduce nitrogen loss and how little we are actually losing from our fields.” Another participant adds, “We are always going to try to grow more with fewer inputs. As our yields go up with genetic gain, we need to be knowledgeable about the amount of nitrogen available to the plant. Computer modeling is a general understanding and I think actual testing is more precise.”

Participants agree working with Dr. Howard Brown is an added bonus. Dr. Brown brings with him a wealth of information to share with local producers. Farmers strive to be great stewards of the land. Studies like this show farmers are committed to the environment and maintaining fertile soil for generations to come.

START THINKIN’ PEACHES!

Champaign County Farm Bureau will once again offer the opportunity to order fresh peaches this summer. The office is currently waiting on this year’s pricing and ordering information. Watch for a complete ad and order blank in the July issue of the CCFB newsletter! Delivery will be on August 23rd.

Greene Gift Makes Big Impact on CCFB Foundation

Don’t Miss the full article on Page 4.



REGISTRATION OPEN for JULY 8 CDL PREP COURSE

There will be a Commercial Driver’s License(CDL)prep course on Saturday, July 8, 2017 at 7:30 a.m. in the Farm Bureau Auditorium. The class will cover general knowledge of CDLs: air brakes, combination vehicles, tankers, doubles and triples, passenger vehicles and hazardous materials.

A CDL is required if you drive any of the following: any combination vehicle with a Gross Combination Weight Rating of 26,001 pounds or more, providing the Gross Vehicle Weight Rating (GVWR) of the vehicle being towed is more than 10,000 pounds; any single vehicle with a GVWR of 26,001 pounds or more or any such vehicle towing another not in excess of 10,000

pounds; any vehicle designed to transport 15 or more people and any vehicle required by federal law to be placarded while transporting hazardous materials. Farmers and farm employees are exempt if they do not drive a semi-trailer and are within 150 air miles of their homes.

The cost of the prep course is \$50 for Farm Bureau members and \$55 for non-members. To register for the class, clip the bottom of this page and send it with the payment to the Farm Bureau, 801 N. Country Fair Dr., Champaign, IL 61821. Registration deadline is Monday, July 3, 2017. There is a minimum of 10 participants to hold the class and a maximum of 50 total participants.

Registration Form for CDL Prep Course

Name: _____

Address: _____
street or county road address city zip

Driver’s License #: _____

Phone: _____
home/work cell phone

Check the test(s) which needs to be taken:

_____ General Knowledge _____ Doubles/Triples

_____ Air Brakes _____ Passenger Vehicles

_____ Combination Vehicles _____ Hazardous Materials
_____ Tankers

Farm Bureau member (\$50) _____ Non Farm Bureau member (\$55)

Return to:
Champaign County Farm Bureau
Registration Deadline: July 3, 2017

ATTN: Brenda
801 N. Country Fair Dr.
Champaign, IL 61821



May Recap

President, Chris Murray

The weather during the month of May summarizes the rollercoaster of emotions that have been running through farmers minds. It has been unseasonably cold accompanied by very heavy rains through most of the county. There has been an extremely high amount of replant across many parts of the area.

In the upcoming month, we will have our annual ag summer camp at Parkland College. This event is always exciting to interact with parts of our community that may not be well-informed on what we do as an industry in agriculture. I encourage each you to get involved in one of these volunteer opportunities. There will be lots of opportunities this summer where we can continue to bring the consumer back to the great things that are happening in our farming community.

Sincerely,
Chris Murray

Give Your Driving Skills a TUNE-UP! Register for a Defensive Driving Course at Champaign County Farm Bureau!

Wednesday, May 24 and Thursday, May 25
was CANCELLED

This class has been rescheduled for
Monday, July 31 and Tuesday, August 1
8:00 AM to Noon BOTH days!



Champaign County Farm Bureau
Auditorium: 801 N. Country Fair Drive

**The class in September has also been
cancelled, due to time between classes**

Agricultural Pesticide Clean Sweep Program

Provided by the Illinois Department of Agriculture

Residents of eight Illinois counties can dispose of unwanted agrichemicals for free this year through the Illinois Department of Agriculture’s (IDOA) agricultural pesticide “Clean Sweep” program. A “Clean Sweep” collection has been scheduled in late summer for Champaign county. This program is open to farmers, retired farmers, nursery owners, private pesticide applicators, structural pest control applicators and landowners who inherited unwanted agricultural pesticides with their property.

“There are two main reasons to take advantage of this program,” said Warren Goetsch, Acting Bureau Chief of Environmental Programs. “The Department is able to provide this service free of charge thanks to a grant obtained from the U.S. Environmental Protection Agency. If individuals were to properly dispose of agrichemicals on their own, the cost would be expensive. Secondly, the state of Illinois, not the program participant, will assume liability for the proper disposal of all materials collected.”

Participants must register their products they plan to dispose of by July 14th. Registration is required to give the waste disposal contractor time to prepare for the different kinds of materials that will need to be handled. Forms can be obtained either by calling the Illinois Department of Agriculture’s Pesticide Hotline at 1-800-641-3934 or by visiting the Champaign County Farm Bureau.

“Check Your Calendar!”

June 2017


8	Prime Timers	10 AM
12	Women’s Committee	9:30 AM
13	Legislative Committee	7:30 AM
13	Premier Ladies Marketing	9:30 AM
13	Land Use	6:30 PM
15	Full Board	6:30 PM
19	Lady Landowners	9 AM
19-21	Summer Ag Camp	
23	Drainage Meeting	8 AM
26-28	Summer Ag Camp	
28	1913 Leadership Series	6 PM


July 2017

3	CDL Registration Deadline	
4	Independence Day Observance - Office Closed	
6	Young Ag Leaders	6:30 PM
8	CDL Class	7:30 AM
10	Women’s Committee	9:30 AM
11	Premier Ladies Marketing	9:30 AM
12	1913 Leadership Series	6 PM
13	Prime Timers	10 AM
13	Full Board	6:30 PM
14	Prime Timers	10:00 AM
27	1913 Leadership Series	6 PM

Drainage Meeting

June 23rd






Champaign County Farm Bureau &
Champaign County Soil & Water Conservation
District

The Latest News Regarding Water & Drainage Districts

June 23th starting at 8:00 a.m. at the Champaign County Farm Bureau.

The meeting is open to all drainage district commissioners and individuals who have an interest in water related topics. Featured topics:

- CRP— Working on Maintaining and Rules that are associated with it.
- Working with Non-Farming Land Owners and Farm Managers.
- Cover Crops & Data Results on Capturing Nutrients.
- Drainage commissioners— roles and responsibilities.



The event is free and no RSVP is required.

**Event Location:
801 N. Country Fair Dr. Ste. A
Champaign, IL 61821**

Collegiate Farm Bureau

By: Lesley Gooding



Newly elected officer team: President Rachel Hawk, Vice President Christy Allen, Treasurer Chris North, Secretary Kassidy Kimpling, Member Services and Programming Coordinator Stephen Riskedal, Public Relations Executive Kolton Kimpling, Governmental Affairs Representative Kade Hill, Agricultural Education and Literacy Representative Danielle Brinkmann, and ACES Council Representatives Ethan Plote and Jordan Johns

The University of Illinois is home to the first chapter of the Collegiate Farm Bureau. The chapter kicked off in fall of 2012 and just celebrated its 5 year anniversary in January 2017. Jenny Webb, Illinois Farm Bureau Membership & Program Specialist says “The University of Illinois has a very active chapter with fantastic leadership. There are so many different student organizations at U of I and we are thrilled that these students have chosen Collegiate Farm Bureau and are making the most of their experience.”

The University of Illinois Collegiate Farm Bureau is a very active organization. 2016-17 was a great year with several highlights, including member Andrew Klein competing in the nationwide Collegiate Discussion Meet at the AFBF FUSION Conference in Pittsburgh advancing to the Sweet 16 round.

Other organization activities included a trip to Prairie Fruits Farm & Creamery for a tour and product sampling, assembling boxes for Operation Christmas Child, 5th Anniversary Celebration at Guido’s in January, and members attending the IAA Annual Meeting and IFB Young Leader Conference. Several guest speakers attended meetings throughout the year including Julie Walters (IFB Training & Development); Rita Frazer (RFD Radio); Sean Arians (past national Discussion Meet Winner); Ryan Whitehouse & Russ Orrill (IFB Gov. Affairs)

There are seven collegiate farm bureau chapters in Illinois. Two new chapters are slated to begin in the fall of 2017.

Current Chapters

University of Illinois

Illinois State University

Western Illinois University

Southern Illinois University – Carbondale

Joliet Junior College

Highland Community College

Wabash Valley College

New fall 2017

Lake Land College

Lincoln Land Community College

Upcoming Trip



Join the Champaign County Farm Bureau for a two day trip to Shipshewana, IN, July 26 & July 27. This trip includes bus transportation, two shows, one night hotel accommodation, and three meals.

You will be arriving in Shipshewana on Wednesday, July 26th, in time to catch The Home Game, a musical about a baseball loving boy named Levi Troyer. Laughter and drama will captivate you as young Levi dreams of playing in the big leagues, but his father expects him to stay on the farm. Levi’s dreams of playing baseball come to fruition when he catches the eye of a talent scout. Will Levi choose to follow his dream or fulfill his father’s expectations?

After The Home Game, enjoy the comradery of your fellow travel companions as you sit down for an evening meal at one of Shipshewana’s fabulous restaurants. After a full day of travel and activity you will be able to collapse into your soft bed and plan your Thursday morning activities. Thursday morning you can wake up at your leisure and enjoy breakfast. Take in the sights and sounds of Shipshewana, IN. Travelers are free to peruse the wonderful shops, bakeries and café’s, schedule a buggy tour, visit an auto museum, and more! Lunch will be on your own at one of Shipshewana’s fine restaurants.

After lunch the final show begins. Mennonite Girls Can Cook is an exciting show about a small town cable cooking show, hosted by two Mennonite women, which attracts the attention of Hollywood. Get a good belly laugh going as you watch the Mennonite Girls prepare to hit it big!

Great friends, great shows, and a lot of sightseeing...what more could you ask for? Call CCFB for more details at 217-352-5235.

Travel cost per person: \$235 per person/double bed; \$300 per person/single bed.

Parkland Agriculture

Helping Champaign County FFA Chapters



Lindsey Decker planting with Clayton Smith, Parkland College, the Unity FFA Plot

Parkland Ag program has been supporting Champaign County FFA chapters with their plots for the past few years. They currently assist with planting and harvest, teaching FFA members about production agriculture. Today, Parkland currently helps St. Joseph, Mahomet, Unity, Rantoul and Monticello FFA chapters. Jenni Fridgen and Clayton Smith also offer help with soil testing the plots. “There are hands-on opportunities that provide a great way to teach kids who have not been exposed to agriculture.”, said Fridgen. These plots are currently offered by FFA chapter alumni and/or local businesses, averaging 15 acres. Main focus with these plots are Ag production and Ag Precision.



KIRK BULTA
Executive Director



MYLA MUNRO
Earth Partners Coordinator

CCFBFOUNDATION.COM



/CCFBFOUNDATION



/CCFB_FOUNDATION

The Legacy of Vincent O. Greene

Providing an Education for Tomorrow's Leaders



"When you look at how thoughtfully Mr. Greene used his wealth to impact others, you see an impressive and caring individual."

An impact that will be felt for years, multiple scholarships programs will be continued, or created, at the bequest of Vincent Greene. Over \$3.6 million dollars has been donated to various local and regional charities, including the Champaign County Farm Bureau Foundation.

Greene's \$200,000 gift to the CCFB Foundation, the largest ever received, will create the Vincent O. Greene Scholarship Fund to benefit Champaign County students pursuing a college degree in agriculture.

Bulta says it's an incredible honor to be entrusted with Mr. Green's legacy. "The Foundation Board of Directors and I are incredibly humbled and proud to carry on his tradition."

A tradition which started years ago as Greene would help to defray the growing cost of a college education; offering financial support to family, friends, and the tenants of his Livingston, and DeWitt County farms.

It was his agricultural roots, and his friendship with longtime Farm Bureau members and former CCFB Foundation Board Members Mildred Luther, and Kathryn and William Henderson, which led Greene

to the Foundation. A donation which Bulta calls "a true blessing" for the Foundation.

This remarkable investment in the future of agriculture will provide opportunity for countless young men and women throughout our county at a time when Bulta says it is needed most. "The leadership experiences and drive found within our next generation of agriculturalists is incredibly promising. However with the ever-rising cost of education it becomes incredibly tough for families to fully support a college education." Bulta tells us this is where Greene's legacy hits the road.

Through the Vincent O. Greene Scholarship Fund, and others like it, the Foundation is able to grow their support of tomorrow's industry leaders. Rewarding student leaders for their scholarship, impact on our communities, and commitment to the future of agriculture; the Foundation has invest-

ed in the college careers of over 390 scholars since its formation in 1986. Greene's gift will most certainly increase this impact.

The Champaign County Farm Bureau Foundation provides educational opportunities that impact the future of the food and agricultural industry in Champaign County, and around the world. In addition to its scholarship program, the Foundation's Ag in the Classroom program - Earth Partners, educates over 11,000 local school students, and consumers, annually. The Earth Partners' programs connects students to the food system and educates of agriculture's importance in our local communities.

To learn more about the CCFB Foundation, or to explore ways in which you might impact the Foundation, visit www.ccfbfoundation.com or call Kirk Bulta at the Farm Bureau office at (217) 352-5235.

Impacting the Champaign County Farm Bureau Foundation

How You Can Make a Difference

Participate

Become familiar with Foundation programming by volunteering for the many opportunities available within our Earth Partners and Scholarship committees.

Donations to CCFB Foundation events such as our Coffee Shop Tour, Summer Golf Outing or Harvest Gala are tax deductible. This includes tickets and event admission, auction purchases, and event sponsorships!

Tax Deductible Giving

Your annual contribution helps to widen the reach of the CCFB Foundation. Tax deductible gifts, in-kind donations, and even the gift of grain can be great tools in managing your tax liability.

Life Insurance

A popular and uniquely flexible way to leave your mark on an organization. Talk to your insurance agent about naming the Champaign County Farm Bureau Foundation as the beneficiary of your Life Insurance policy.

Endowments

Continue the work of a loved one, or honor the legacy of an industry leader, by establishing an endowment fund in support of student scholarships, future Earth Partners Ag Literacy programming and more!

Estate Gifts

Creating a plan today could make a big impact on the future of Champaign County Agriculture. It's never too early to think about how you will be remembered.

If you'd like to discuss any of the opportunities listed above, or additional creative ways in which you can impact Champaign County agriculture, please contact CCFB Foundation Executive Director Kirk Bulta at (217) 352-5235 or Kirk@ccfarmbureau.com. For more information on the CCFB Foundation visit our website at www.ccfbfoundation.com.

Celebrating Our Scholars



The CCFB Foundation recognized its 31st class of Foundation Scholars with a luncheon in May. Scholarship recipients joined donors, and other Foundation supporters for the celebration. Maddie Cender(left) of Mahomet visits with CCFB Foundation Board member Chris Karr. Cender is the 2017 recipient of the Mildred Luther Scholarship and is attending Illinois State University.



Busey Bank representative, Josh Hinds(left), shares lunch with Urbana High School graduate Stanley Godia(right). Godia is the 2017 recipient of the Busey Bank Scholarship and is pursuing a degree in Agricultural Economics at the University of Illinois.



Vann Parkin
COUNTRY Financial
Agency Manager



Scott Jackson
217-359-9335



Bret Kroencke
217-359-9391



Jessie DeHaan
217-352-3466



Austin Beaty
217-352-0012



Jim Nelson
217-892-4479



Dan Punkay
328-0023



Stan Ochs
217-352-3296



FINANCIAL

AUTO | HOME | LIFE | BUSINESS | RETIREMENT

SPOTLIGHT

COUNTRY Financial Representative

Stan Ochs



Restaurant Manager to Financial Representative, Stan Ochs started his career as a COUNTRY Financial Representative 16 years ago. Since he began his career at Country, Stan has achieved COUNTRY Financial's All-Star designation 15 times and All-American 14 times. Stan's office is located off Route 45 at 2009 Fox Drive and serves clients throughout Illinois.

Stan began his restaurant career at the age of 16. Washing dishes and later managing the Dixie in Tuscola. He managed several local restaurants including Aunt Sonya's, the Olive Garden and opening several Fazoli's. After over 20 years in the business, Stan needed a change and answered an ad in the local paper for employment with COUNTRY Financial. Why COUNTRY Financial? "My folks had Country since the 1950's (my Mother, who turned 95 last February, still has a life policy with Country she bought in 1942!!) I had Country all my life including when I had 3 teenage drivers. I shopped around and no one could touch Country's rates, so I knew I would be working for a competitive company. On top of that I started doing my own investments in my early 20's and became enamored with financial investing. Country had just started to go big into investments and asset management, so the timing was perfect. I initially got into this for the investments not realizing how much I would come to like the insurance side." Dropping out of high school at the age of 16 and starting a family, (he bought his first life policy at 18) Stan knows how difficult it can be to keep finances in order. He finds that his life experience helps him with younger clients

just starting out and needing many types of insurance, but a little short on cash flow.

Visiting with new and existing clients on a daily basis Stan is often asked a wide variety of questions including the most popular – How much is this going to cost? COUNTRY Financial offers products and services to fit everyone's particular needs at a great price. Before walking out the door, Stan ensures clients have proper liability. "Liability is an inexpensive part of insurance. The roads are overloaded with uninsured and underinsured motorists. If you are not properly insured an accident can be life changing," says Stan.

Stan offers a big piece of advice to clients saying "visit with your agent every 2 to 3 years to review your insurance. Things change and we want to make sure our clients are up to date. We are in the business to help people and we are happy to do it!" COUNTRY Financial is unique offering face to face, one on one, human interaction...clients get more than just a voice on the phone that has no idea who you are and what is appropriate for someone in your situation. COUNTRY Financial Representatives offer sound advice, great products, and worldly experience to back it up!

Stan and his wife, Deidra, have been married for 9 years and are outdoor enthusiasts. They love to camp, travel, hike, hunt and fish. This summer the pair will be revisiting their honeymoon destination, Yellowstone National Park. Throughout their travels, one of the most memorable trips was a 6 day visit to Rome saying "that was a trip to die for!"



Travis Heath
352-4555



Chris Greenwold
217-355-8675



Keith Garrett
217-485-3010



Marcia Woolcott
COUNTRY Financial
Agency Assistant
352-0012



Terry Hill
217-469-9800



Steve Derry
217-352-2655



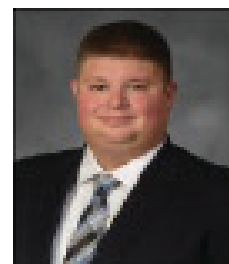
Chuck Rippy
217-586-5030



Dan Duitsman
217-469-2033



John May
217-352-3341



Andrew Deedrich
359-3941



Nathan Hubbard
217-892-4479



MARK THORNSBROUGH,
GENERAL MANAGER

a division of GROWMARK, Inc.

N-Tracker Update

By: Dr. Howard Brown

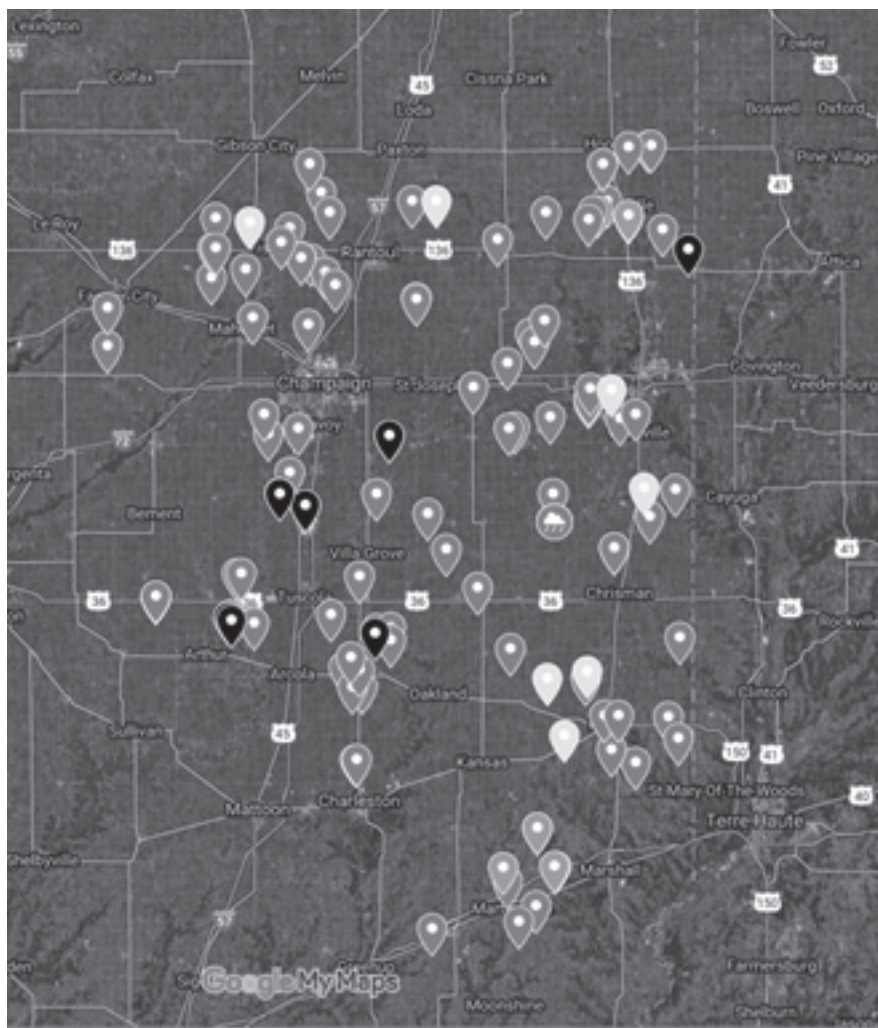


Figure 1. N-TRACKER Sites throughout a 5-County area served by Illini FS.

Nitrogen (N) loss as a result of late April/early May rains was minimal according to over 130 N-TRACKER Sites throughout the Illini FS 5-County area. N-TRACKER is an Illini FS-created tool that allows producers to track plant-available N over time. It provides a way to watch the behavior of plant-available N in the upper 2 feet of the soil profile. However, a larger percentage of plant-available N was found at 1-2 feet, suggesting accelerated downward movement as a result of the heavy rains. Will the N at 1-2 feet continue to move downward? The amount of rainfall after the middle of May will determine how the N will move (wet-down, dry-up).

Is there a need for supplemental N? A common question asked this time of year, but more frequent this growing season due to the heavy early-season rains. Based upon N-TRACKER results so far, the need for supplemental N is questionable in most fields. If a producer's N management system includes a post-emerge N application, then it is needed. If there is a concern that N was lost and more is needed, a simple check of the upper soil profile may provide insight about what N remains (at the site of testing). A few N-TRACKER tests have resulted in a suggestion for supplemental N.

Unfortunately, plant uptake will soon make it nearly impossible to interpret soil N tests. Once plants reach a stage of rapid N uptake, soil test levels of plant-available N will drop (plant uptake), making it nearly impossible to interpret the need for supplemental N (tests may show you falsely need supplemental N). Over the past 4 years, soil N tests show little plant-available N remaining in the soil post-tassel, suggesting that most of the N is already in the plant and that plant uptake is occurring at about the same pace as mineralization. If significant N was found post-tassel it was nearly always associated with the sampler clearing the sight of corn plants to make it easier to collect samples (no plants to take-up N).

Want to get an idea of soil mineralization of plant-available N? Ask your local FS crop specialist about N-TRACKER and establish a tracking site within the crop and on an adjacent site where a 7 ½ ft. area is cleared of plants (three rows wide). Have the first sample collected before plants reach 6 inches in height and then every 2 weeks for 6 weeks. Differences between the two sites will reflect mineralization of organic N and

how the released N is changed by plant uptake. Weeds must be controlled on the bare soil site. Weeds can be more aggressive with N uptake than corn plants.

Interested in learning more about N-TRACKER for 2018? Visit www.nu-tracker.com to see how N-TRACKER can be used to track plant-available N over time. The Paris High School Agriculture and chemistry students brought the program to life by collecting samples, testing samples, listening to lectures about the N Cycle, and taking quizzes. Stop by the site and see how plant-available N in the upper soil profile changed with time and environment. See what happened to N applied last Fall compared to N applied this Spring. Data from the most recent sampling date (5/19/2017) will show how much impact (if any) the heavy rains of late April/early May had on plant-available N at 0-2 ft. A sincere "Thank You" is extended to Paris High School students, staff and administration, Edgar County Community Foundation, Illinois Fertilizer and Chemical Association, and Illini FS for making this project possible.

Crop Insurance and Moving Forward

By: Lesley Gooding



corn. According to Matt "A number of clients have spotty replant areas, but in a few instances the client has torn up the entire field and replanted it."

Are you considering replanting as an option? If so, keep in mind that federal crop insurance only pays to replant one time...replant one acre, one time. What if you planted corn as the first crop and would like to tear it out and plant beans? In this case you are not filing a Replant Claim, but rather a Production Loss Claim. Matt says "Be sure to contact your Crop Insurance Specialist so you will know your options."

Adjustors are busy right now with an onslaught of replant claims. Prior authorization from the AIP is required for all Replant Claims. Claims under 50 acres per unit can be authorized over the phone, but an appraisal needs to be completed for any Replanting acres which exceed 50 acres per

unit. Whichever route you are choosing **CONTACT YOUR ADJUSTOR FIRST!**

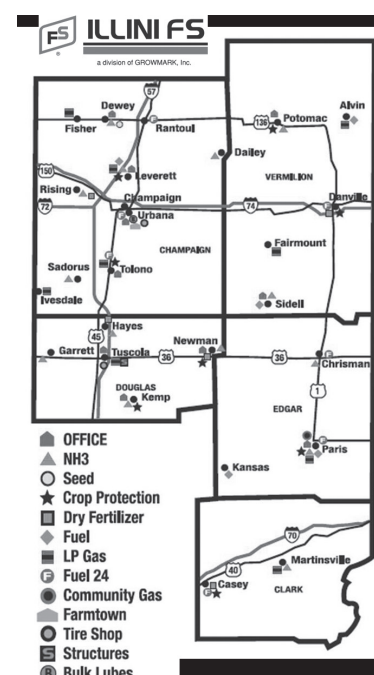
Champaign County Crop Insurance Final Plant Dates

June 5th - Corn Deadline

June 20th - Soybean Deadline

The "Late Planting Period" is 25 days after the Final Plant Date for both corn and soybeans here in Illinois. Acreage planted during the late planting period will have its guarantee reduced by 1 percent per day for each day after the Final Planting Date. Matt says "The corn in Champaign County looks okay right now, but everything is cold and wet. We definitely need some sunshine and heat. Once we get sunshine and heat the crops will take off, but this will also be ideal conditions for weeds to prosper. Be mindful of your fields, scout early! We have seen waterhemp and marehail in fields already. A serious concern of ours right now is weed control!"

Get your boots muddy, scout your fields and keep an eye out for weeds. Growers with questions and concerns should contact their crop specialist.



June 8 starting at 10 a.m.

Speaker: Joan Jordan
Trip to Australia
Entertainment: String Attached



Ken Roellig, Prime Timers Chairman

- Meetings are held on the second Thursday of each month
- Cost is \$8 to attend
- Call 352-5235 ahead of each meeting to reserve your spot

Mark your calendar - Don't miss a single Prime Timer date!

Prime Timers 2017:

July 13
August 10
September 14

Landowners Video Series

Have you been following our new video series on YouTube? You may have seen the link to these videos shared on social media or in the Friday Leader e-news.

The landowners video series was designed to share a message from the field helping those who may not be in their fields, in Champaign County, on a regular basis. These highlights focus on current events of planting, replant, next steps, recent rainfall, what's on the horizon for the growing season and other field related topics.

"This video series is a great way to connect with landowners that are not on the farm everyday," says Chris Murray, Champaign County Farm Bureau Board President.

Have a specific topic you think would be of value to other landowners? Send your ideas in to david@ccfarmbureau.com.

CHAMPAIGN COUNTY FARM BUREAU NEWS

(USPS 099-840)

801 N. Country Fair Drive, Ste. A, Champaign, IL 61821
Published Monthly by the Champaign County Farm Bureau

801 N. Country Fair Drive, Ste. A,
Champaign, IL 61821

SUBSCRIPTION RATE -- \$3 PER YEAR

Periodicals Postage Paid at Champaign
(ISSN 1078-2966)

POSTMASTER: Send address changes to "Farm Bureau News" 801 N. Country Fair Drive,
Ste. A, Champaign IL 61821-2492

OFFICERS

Chris Murray, Brown Township.....President
Adam Watson, Crittenden Township.....1st Vice President
Jason Crider, Mahomet Township.....2nd Vice President
Brian Dewitt, Pesotum Township.....Secretary
Lee Waters, Treasurer.....Treasur

Carl Smith, Ayers; Dale Tharp, Champaign; Frank Hardimon, Colfax; Kristi Pflugmacher, Condit; Mitchell Heap, East Bend; Trent Wolken, Harwood/Kerr; Bob Furtney, Hensley; Mike Briggs, Ludlow; Christi DeLaney, Newcomb; Brennon Breymeyer, Ogden; Andy Hughes, Philo; Justin Leerkamp, Raymond; Loretta Stoerger, Sadorus; Paul Berbaum, Scott; Darrell Rice, Sidney; Steve Hammel, Somer; Brian Krukewitt, South Homer; Derek Harms, Stanton; Tom Swigart, Tolono; Dale Franzen, Rantoul; Paul Routh, Urbana; Joe Burke, Marketing Committee Chairman; Paulette Brock, Women's Committee Chair; Ken Roellig, Prime Timers; Lynn Doran, Young Ag Leaders

CHAMPAIGN COUNTY FARM BUREAU

Hours: 8:00 a.m. to 4:30 p.m. Monday-Friday
Manager -- Bradley Uken, FBCM
Assistant Manager -- David Fulton
Communications Director -- Lesley Gooding
Administrative Assistant -- Brenda Wood
Membership Director -- Deidra Ochs
Earth Partners Director -- Myla Munro
Foundation Director -- Kirk Builta

Contact us at (217) 352-5235
www.ccfarmbureau.com

ILLINOIS FARM BUREAU ADDS NEW MEMBER BENEFITS

By: Melissa Rhode

Illinois Farm Bureau members now can access additional member benefits and discounts when they're on the go with the new membership benefit web platform and iPhone App.

"We're extremely pleased to offer this new platform for our members, giving them added discounts on hotels, theme parks, restaurants, movies and everything in between," said Melissa Rhode, Marketing Director, Illinois Farm Bureau. "Best of all, the app shows both local and national discounts, and can even notify members when they're near a business that offers discounts."

To access the new web platform

at <https://ilfb.abenity.com>, members must create an account and provide their Illinois Farm Bureau membership ID number. Members can also go to the iPhone App Store, search IL Farm Bureau Membership Benefits and download the app on their iPhone or iPad. Once downloaded, members may customize the app to include frequently used offers; search offers by business name, location and category; and provide instant in-store discounts at nearby restaurants and retailers.

"Our members have nothing to lose and everything to gain with this new platform," Rhode said. "Members will find more than 302,000 discounts on top of what is already available through their Illinois Farm Bureau membership."

Members who have questions about the app or additional Illinois Farm Bureau member benefits may contact their county Farm Bureau or the Illinois Farm Bureau Membership Call Center at 309-557-2689

NEW! Champaign County
2017 Plat Books

View your property on landowner & aerial view maps

On Sale Now
Champaign County Farm Bureau
801 N. Country Fair Drive, Suite A
Champaign, IL 61821
217-352-5235
eBooks available in office

Wall Maps Available

Stop by before April 14, 2017,
to enter our drawing for a free
Champaign County Wall Map or SmartMap.

Visit mappingsolutionsGIS.com for plat books,
wall maps, eBooks, and SmartMaps in over 500 additional counties.

The 1913

Distinguished Leadership

The Champaign County Farm Bureau kicked off The 1913 – Distinguished Leadership effort earlier this year. The designation is in honor of the early leaders who founded the Champaign County Farm Bureau back on September 1, 1913. The 1913 – Distinguished Leadership looks to recognize board members that participate in four of the six leadership training sessions.

This summer we'll conclude the program with five opportunities for you to achieve this designation. The remaining schedule for leadership training sessions are:

June 28th – Local Government 101 and running effective meetings

July 12 – relaying the message of agriculture to consumers and Ag-In-The-Classroom; sharing agriculture's message with classrooms around the county

July 27 – Personality types and working together effectively & leadership styles and leadership defined

August 5 – Health, rescue and overall farm safety – 9AM

August 21 – International Trade and what it means to agriculture

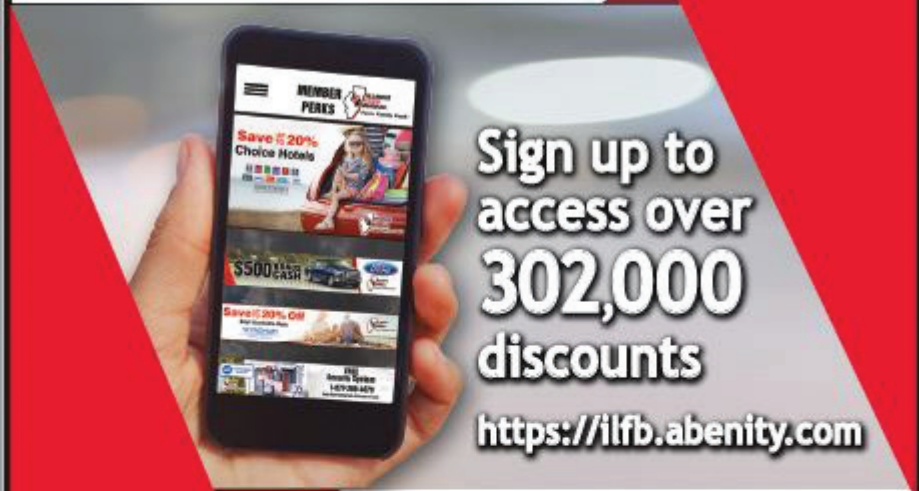
Though The 1913 – Distinguished Leadership designation is only for board members, the meetings remain open to all members 18 and older, including spouses at a cost of \$5 per person per session. Dinner is included each evening starting at 6:00 p.m. Each session will conclude by 9:00 p.m. An RSVP is required for each session.

"Apply yourself. Get all the Education you can but then...do something.
Don't just stand there, make it happen." – Lee Iacocca

BENEFITS INCLUDE:

- AG ELECTRIC
- AGRIBLE
- A & R ELECTRIC
- ALL ABOUT EYES
- ARROW AUTO GLASS
- BARBECK COMMUNICATIONS
- BARD OPTICAL
- BLOSSOM BASKET FLORIST
- C.A.R.'S AUTO DETAILING
- CHAMPAIGN CHRYSLER/DODGE/JEEP/RAM
- COCKY COLLECTION VIRGIN EXTENSIONS
- COLLETTE TRAVEL
- CONNECT HEARING
- COUNTRY SQUIRE CLEANERS
- CULVER'S
- DRIVEWAY CHIMES, OGDEN
- INTERSTATE BATTERIES
- GREEN PURPOSE
- HUEY'S HOME MEDICAL
- FASTENAL, CHAMPAIGN
- THE FITNESS CENTER -FURNITURE WORLD OF RANTOUL
- GARBER'S CLEANERS
- GOOSE CREEK FIREARMS TRAINING
- HOUCHENS HEATING & A/C GROUP
- ILLINI CONTRACTOR'S SUPPLY
- ILLINI FS FARMTOWN/URBANA
- ILLINI HEARING
- NANCY'S CREATIONS
- NAPA AUTO PARTS
- NICK'S PORTERHOUSE OF PAINTS
- O'REILLY AUTO PARTS
- PARD'S WESTERN SHOP
- RAHN EQUIPMENT COMPANY
- RAINBOW INTERNATIONAL
- RANTOUL GOODYEAR TIRE CENTER
- RANTOUL PIZZA PUB
- REFINERY HEALTH CLUB
- ROSATI'S PIZZA & CATERING
- SAFELY FILED
- SERVICE MASTER
- SHOOTER'S BAR AND GRILL - RANTOUL
- RED WING SHOES
- SIDNEY DAIRY BARN
- SUNSINGER WINERY
- SULLIVAN-PARKHILL AUTOMOTIVE
- TICKETSATWORK.COM
- WYLDEWOOD CELLARS
- ZA'S RESTAURANT
- *BENEFITS SUBJECT TO CHANGE WITHOUT NOTICE*

► New Member Benefit Platform



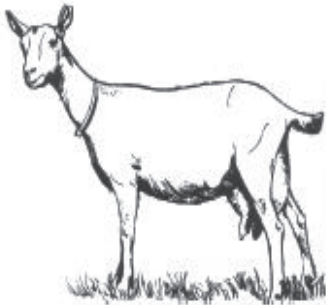
Access local and national discounts at work, at home, or on the go! Save on thousands of hotels, restaurants, movie tickets, retailers, florist, theme parks, national attractions, concerts, and events.

 **Sign up today**
<https://ilfb.abenity.com>



All discount offers are subject to change at any time without notice.
 Log in regularly to view the latest discounts available.

June Dairy Day - Central Illinois -



Prairie Fruits Farm and Creamery - Kilgus Farmstead - Ropp Jersey Cheese - Green Meadows Farm

Saturday, June 17 2:00 PM - 5:00 PM

Prairie Fruits Farm and Creamery
 4410 N Lincoln, AVE.
 Champaign, Illinois

Join us for this FREE event, open to the public!
 June is National Dairy Month, a great time to celebrate local dairy farmers while having fun learning about agriculture near you! All the dairy products you can imagine for sale and sampling! For a complete listing of participating organizations and farms, please find our event page on

****Facebook - Central IL June Dairy Day****
 ALL PROCEEDS GO DIRECTLY TO EASTERN ILLINOIS FOOD BANK

Farm Family Safety Day

-Learning is the First Step-
August 5th, 2017
9:00 AM - 4:00 PM
Champaign County Farm Bureau

[Join us for a day of Farm Safety & Rescue Training](#)

The Champaign County Farm Bureau Young Ag Leaders are partnering with Illinois Farm Bureau, Illinois Fire Service Institute and Carle Center for Rural Health and Farm Safety to offer families a day of training and learning. The purpose of this event is to provide youth with educational awareness of hazards on the farm and adults with CPR/AED and First Aid training. Youth will cover grain bin entrapment, tractor rollovers, ATV safety and chemical safety. Adults will learn how to provide Cardiopulmonary Resuscitation(CPR),properlyusinganautomatedexternal defibrillator (AED) and how to provide proper first-aid.

This event is **FREE!** Lunch will be provided.
 To sign up, please call the Champaign County Farm Bureau office: (217) 352-5235.

Women’s Committee Sponsors Rural Road Safety Display



The Women's Committee has participated in many learning activities in the community involving children. This year, in response to the Carle sponsored Playing- It-Safe activity, several volunteers from the Women's Committee and Farm Bureau created a scale model of a rural road with a typical mix of vehicles, including a tractor with an implement, a semi, and other cars and a pickup. Unsafe practices are built into the display for talking points. While the display is eye appealing to children, the safety message goes beyond the children, as the adults who accompany them also gain knowledge, both from the display and an accompanying handout. This display will be available to the Farm Bureau for a wide variety of multiple activities.



Above: CCFB President, Chris Murray throws the first pitch at the very first Ag Night at Illinois Field. The evening was to highlight Champaign County Farmers and show appreciation to Farm Bureau members and COUNTRY Financial Clients.



Left: Darrin Riggs gives the Young Ag Leaders a tour of the Riggs Beer Company during their May social event. Riggs offered an informative tour accompanied with agricultural insight and how they brew their beer. Along with the tour, there was a tasting and Riggs shared all the characteristics of each.